

Southeastern Conference Volleyball

History



Year-By-Year Standings

1982

Team	SEC	Pct.	Overall	Pct.
Tennessee			31-7	.816
Georgia			41-12	.774
Ole Miss			25-13	.658
LSU			44-25	.638
Kentucky			21-14	.600
Miss. State			7-33	.175

1983

Team	SEC	Pct.	Overall	Pct.
Kentucky	5-0	1.000	41-6	.872
LSU	4-1	.800	29-23	.558
Tennessee	3-2	.600	30-10	.750
Georgia	2-3	.400	22-10	.688
Ole Miss	1-4	.200	28-14	.667
Miss. State	0-5	.000	7-29	.194

1984

Team	SEC	Pct.	Overall	Pct.
Kentucky	6-0	1.000	22-8	.733
Tennessee	5-1	.833	24-10	.706
LSU	4-2	.667	18-24	.429
Georgia	3-3	.500	28-11	.718
Florida	1-5	.167	16-16	.500
Ole Miss	1-5	.167	21-13	.618
Miss. State	1-5	.167	18-20	.474

1985

Team	SEC	Pct.	Overall	Pct.
Georgia	5-1	.833	37-7	.841
LSU	5-1	.833	33-10	.767
Florida	4-2	.667	33-13	.717
Tennessee	3-3	.500	12-24	.333
Ole Miss	2-4	.333	29-15	.659
Kentucky	2-4	.333	14-23	.378
Miss. State	0-6	.000	9-29	.237

1986

Team	SEC	Pct.	Overall	Pct.
*LSU	5-1	.833	35-9	.795
*Georgia	5-1	.833	33-8	.805
Kentucky	4-2	.667	22-12	.647
Florida	4-2	.667	15-23	.395
Tennessee	2-4	.333	22-13	.629
Ole Miss	1-5	.167	20-15	.571
Miss. State	0-6	.000	15-23	.395
Auburn	--	--	19-16	.543

*LSU and Georgia are SEC Co-Champions based on their regular-season conference winning percentage. Prior to 1986 the SEC Tournament Champion was declared the league champion.

1987

Team	SEC	Pct.	Overall	Pct.
Kentucky	7-0	1.000	31-2	.939
LSU	6-1	.857	25-11	.555
Florida	5-2	.714	37-6	.860
Tennessee	4-3	.571	17-17	.500
Georgia	3-4	.429	20-14	.588
Ole Miss	2-5	.286	15-20	.429
Auburn	1-6	.143	17-20	.459
Miss. State	0-7	.000	12-26	.324

1988

Team	SEC	Pct.	Overall	Pct.
Kentucky	7-0	1.000	26-7	.788
Tennessee	5-2	.714	23-12	.657
LSU	5-2	.714	22-13	.629
Florida	5-2	.714	23-14	.622
Georgia	3-4	.429	24-12	.667
Auburn	2-5	.286	25-12	.676
Ole Miss	1-6	.143	6-18	.250
Miss. State	0-7	.000	17-19	.472

1989

Team	SEC	Pct.	Overall	Pct.
LSU	8-0	1.000	30-8	.789
Georgia	7-1	.875	29-4	.882
Kentucky	6-2	.750	24-11	.686
Tennessee	5-3	.635	13-15	.464
Ole Miss	4-4	.500	30-12	.714
Florida	3-5	.375	17-12	.586
Auburn	2-6	.250	21-14	.600
Miss. State	1-7	.125	20-14	.588
Alabama	0-8	.000	13-24	.351

1990

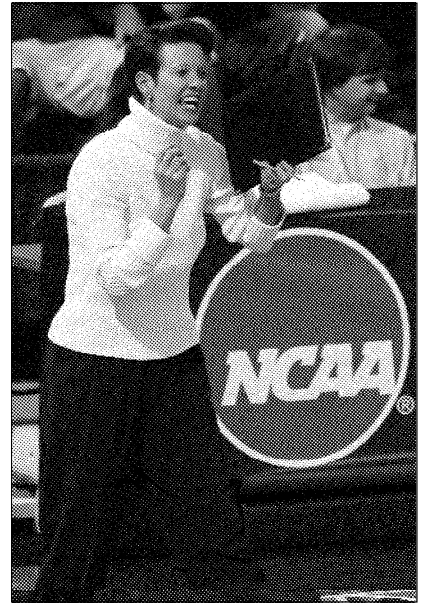
Team	SEC	Pct.	Overall	Pct.
LSU	8-0	1.000	34-7	.829
Kentucky	7-1	.875	22-12	.647
Georgia	4-4	.500	29-14	.674
Auburn	4-4	.500	24-13	.649
Florida	4-4	.500	15-16	.484
Tennessee	4-4	.500	12-17	.414
Ole Miss	3-5	.375	14-10	.583
Miss. State	1-7	.125	17-13	.567
Alabama	1-7	.125	15-22	.405

1991

Team	SEC	Pct.	Overall	Pct.
LSU	13-1	.929	35-2	.946
Florida	13-1	.929	35-5	.875
Georgia	12-2	.857	28-8	.778
Kentucky	8-6	.571	24-13	.649
Auburn	7-7	.500	22-13	.629
Alabama	5-9	.357	14-18	.438
Ole Miss	4-10	.286	13-18	.419
Tennessee	4-10	.286	12-17	.414
Miss. State	3-11	.214	15-20	.429
S. Carolina	1-13	.071	13-24	.351

1992

Team	SEC	Pct.	Overall	Pct.
Florida	14-0	1.000	34-2	.944
LSU	12-2	.857	26-9	.743
Georgia	10-4	.714	24-9	.727
Kentucky	10-4	.714	25-9	.735
Tennessee	8-6	.571	13-14	.481
Auburn	8-6	.571	11-19	.367
Alabama	4-10	.286	10-22	.313
Ole Miss	3-11	.214	11-23	.324
S. Carolina	1-13	.071	11-21	.344
Miss. State	0-14	.000	17-16	.515



Florida head coach Mary Wise has led the Lady Gators to 13-consecutive SEC regular-season titles and 11 out of the last 12 SEC tournament crowns.

1993

Team	SEC	Pct.	Overall	Pct.
Florida	14-0	1.000	33-4	.892
Kentucky	12-2	.857	29-4	.879
Georgia	12-2	.857	29-6	.829
LSU	8-6	.571	21-16	.568
Tennessee	7-7	.500	18-13	.581
Auburn	7-7	.500	15-15	.500
S. Carolina	4-10	.286	15-18	.455
Miss. State	4-10	.286	15-19	.441
Alabama	2-12	.143	17-21	.447
Ole Miss	0-14	.000	3-28	.097

1994

Team	SEC	Pct.	Overall	Pct.
Florida	13-1	.929	28-6	.824
Georgia	12-2	.857	26-9	.743
Arkansas	10-5	.667	19-17	.528
S. Carolina	8-6	.571	24-12	.667
Kentucky	8-6	.571	13-21	.382
Alabama	8-7	.533	21-14	.600
Auburn	6-9	.400	16-15	.516
Ole Miss	6-9	.400	9-20	.310
LSU	4-11	.267	8-23	.258
Miss. State	3-12	.200	12-20	.375
Tennessee	2-12	.143	10-21	.323

1995

Team	SEC	Pct.	Overall	Pct.
<i>Eastern Division</i>				
Florida	14-0	1.000	35-2	.946
Georgia	11-3	.786	21-9	.700
S. Carolina	8-6	.571	21-11	.656
Kentucky	7-7	.500	10-18	.357
Tennessee	0-14	.000	7-25	.219
<i>Western Division</i>				
Arkansas	11-4	.733	25-15	.625
LSU	8-7	.533	20-12	.625
Auburn	7-8	.467	16-13	.552
Alabama	7-8	.467	24-10	.706
Ole Miss	4-11	.267	17-17	.500
Miss. State	3-12	.200	16-18	.471

Year-By-Year Standings



1996

Team	SEC	Pct.	Overall	Pct.
<i>Eastern Division</i>				
Florida	14-0	1.000	37-2	.949
S. Carolina	10-4	.714	22-8	.733
Kentucky	8-6	.571	12-20	.375
Tennessee	6-8	.429	17-16	.515
Georgia	3-11	.214	12-18	.400
<i>Western Division</i>				
Arkansas	11-4	.733	26-11	.703
Auburn	11-4	.733	22-9	.710
Ole Miss	7-8	.467	19-11	.633
LSU	6-9	.400	10-20	.333
Miss. State	3-12	.200	18-19	.486
Alabama	1-14	.067	5-31	.139

1997

Team	SEC	Pct.	Overall	Pct.
<i>Eastern Division</i>				
Florida	14-0	1.000	34-4	.895
S. Carolina	11-3	.786	21-8	.724
Georgia	10-4	.714	20-12	.625
Tennessee	5-9	.357	15-19	.441
Kentucky	4-10	.286	14-16	.467
<i>Western Division</i>				
Arkansas	13-2	.867	30-6	.833
Auburn	11-4	.733	20-9	.690
Ole Miss	7-8	.467	12-18	.400
Miss. State	4-11	.267	12-22	.353
Alabama	2-13	.133	9-23	.281
LSU	0-15	.000	9-21	.300

1998

Team	SEC	Pct.	Overall	Pct.
<i>Eastern Division</i>				
Florida	14-0	1.000	35-3	.921
S. Carolina	8-6	.571	21-11	.656
Georgia	8-6	.571	14-14	.500
Tennessee	7-7	.500	19-10	.655
Kentucky	6-8	.429	16-14	.533
<i>Western Division</i>				
Arkansas	14-1	.933	29-6	.829
Auburn	9-6	.600	22-9	.710
Miss. State	5-10	.333	9-20	.310
LSU	5-10	.333	15-16	.484
Alabama	2-13	.133	14-18	.438
Ole Miss	2-13	.133	9-23	.281

1999

Team	SEC	Pct.	Overall	Pct.
<i>Eastern Division</i>				
Florida	14-0	1.000	33-3	.917
S. Carolina	8-6	.571	14-12	.538
Tennessee	8-6	.571	19-13	.594
Kentucky	6-8	.429	16-15	.516
Georgia	5-9	.357	10-16	.385
<i>Western Division</i>				
Arkansas	14-1	.933	30-7	.811
Auburn	8-7	.533	19-11	.633
Alabama	7-8	.467	17-15	.531
LSU	7-8	.467	17-15	.531
Miss. State	2-13	.133	11-16	.407
Ole Miss	1-14	.067	10-19	.345

2000

Team	SEC	Pct.	Overall	Pct.
<i>Eastern Division</i>				
Florida	14-0	1.000	29-5	.853
S. Carolina	12-2	.857	22-7	.759
Tennessee	9-5	.643	23-10	.697
Georgia	5-9	.357	15-15	.500
Kentucky	3-11	.214	6-21	.222
<i>Western Division</i>				
Alabama	11-4	.733	22-8	.733
Arkansas	9-6	.600	16-14	.533
LSU	6-9	.400	15-17	.469
Ole Miss	5-10	.333	15-16	.484
Miss. State	3-12	.200	16-14	.533
Auburn	3-12	.200	13-16	.448

2001

Team	SEC	Pct.	Overall	Pct.
<i>Eastern Division</i>				
Florida	14-0	1.000	28-2	.933
S. Carolina	10-4	.714	20-6	.769
Tennessee	7-7	.500	16-11	.593
Kentucky	6-8	.429	13-15	.464
Georgia	5-9	.357	11-14	.444
<i>Western Division</i>				
Arkansas	12-3	.800	21-12	.636
LSU	10-5	.667	16-11	.593
Alabama	10-5	.667	22-9	.710
Miss. State	3-12	.200	8-17	.320
Ole Miss	3-12	.200	7-18	.280
Auburn	0-15	.000	1-26	.037

2002

Team	SEC	Pct.	Overall	Pct.
<i>Eastern Division</i>				
Florida	16-0	1.000	34-3	.919
S. Carolina	14-2	.875	22-7	.759
Georgia	8-8	.500	20-15	.571
Tennessee	8-8	.500	20-11	.645
Kentucky	6-10	.375	13-18	.419
<i>Western Division</i>				
Arkansas	14-2	.875	27-6	.818
LSU	9-7	.563	17-11	.607
Alabama	8-8	.500	19-15	.559
Ole Miss	4-12	.250	11-17	.393
Miss. State	1-15	.063	10-20	.333
Auburn	0-16	.000	1-27	.036

2003

Team	SEC	Pct.	Overall	Pct.
<i>Eastern Division</i>				
Florida	16-0	1.000	36-2	.972
Tennessee	10-6	.625	22-9	.710
Georgia	10-6	.625	18-13	.581
S. Carolina	6-10	.375	12-18	.400
Kentucky	6-10	.375	12-18	.400
<i>Western Division</i>				
Arkansas	15-1	.938	27-7	.794
Alabama	11-5	.688	18-13	.581
LSU	6-10	.375	11-19	.367
Ole Miss	5-11	.313	7-24	.226
Miss. State	2-14	.125	3-23	.125
Auburn	1-15	.063	10-18	.357

SEC Regular Season Champions

Year	Champion	SEC Record	Overall Record
1979	Kentucky		35-18
1980	Kentucky		39-8
1981	Tennessee		34-22
1982	Tennessee		31-17
1983	Kentucky	5-0	41-6
1984	Tennessee	5-1	24-10
1985	Georgia	5-1	37-7
1986	Georgia	5-1	33-8
	LSU	5-1	35-9
1987	Kentucky	7-0	31-2
1988	Kentucky	7-0	31-2
1989	LSU	8-0	30-8
1990	LSU	8-0	34-7
1991	LSU	13-1	35-2
	Florida	13-1	35-5
1992	Florida	14-0	34-2
1993	Florida	14-0	33-4
1994	Florida	13-1	28-6
1995	Florida	14-0	35-2
1996	Florida	14-0	37-2
1997	Florida	14-0	34-4
1998	Florida	14-0	35-3
1999	Florida	14-0	33-3
2000	Florida	14-0	29-5
2001	Florida	14-0	28-2
2002	Florida	16-0	34-3
2003	Florida	16-0	35-1



Tournament Results

All-Time SEC Tournament Standings

Team	By Winning Percentage			
	Appear.	W	L	Pct.
Florida	19	41	9	.820
Kentucky	23	31	19	.620
Arkansas	9	14	9	.609
LSU	24	27	25	.519
Tennessee	24	24	22	.522
Alabama	16	18	17	.514
Georgia	22	23	28	.451
S. Carolina	12	8	12	.400
Ole Miss	18	11	23	.424
Auburn	13	5	17	.227
Miss. State	17	5	21	.192
Vanderbilt	1	0	4	.000

Team	By Total Wins		By Championships	
	W	L	Team	W
Florida	41		Florida	11
Kentucky	31		Kentucky	5
LSU	27		LSU	4
Tennessee	24		Tennessee	3
Georgia	23		Arkansas	1
Alabama	18		Georgia	1
Arkansas	14		Ole Miss	0
Ole Miss	11		S. Carolina	0
S. Carolina	8		Miss. State	0
Auburn	5		Auburn	0
Miss. State	5		Alabama	0
Vanderbilt	0		Vanderbilt	0

1979

Pool Play: Alabama def. Auburn 2-0 (15-5,15-2); Georgia def. Vandy 2-0 (15-7,15-8); Ole Miss def. Auburn 2-0 (15-10,15-7); Alabama def. Georgia 2-1 (15-7,8-15,15-7); Auburn def. Vandy 2-1 (15-9,10-15,15-13); Ole Miss def. Georgia 2-0 (15-4,15-7); Alabama def. Ole Miss 2-1 (15-8, 11-15,16-14); Alabama def. Vandy 2-0 (15-4,15-9); Georgia def. Auburn 2-1 (10-15,15-8,15-4); Ole Miss def. Vandy 2-0 (15-7,15-2); Kentucky def. LSU 2-0 (15-7,15-9); LSU def. Miss. State 2-0 (15-5,15-5); Tennessee def. Miss. State 2-0 (15-6,16-14); Kentucky def. Tennessee 2-0 (15-10,15-12); Tennessee def. LSU 2-0 (15-6,15-9); Kentucky def. Miss. State 2-0 (15-9,15-2). **Quarterfinals:** Tennessee def. Georgia 3-0 (16-14,15-9,15-3); LSU def. Ole Miss 3-0 (15-13,15-7,16-14). **Semifinals:** Tennessee def. Alabama 3-0 (15-10,15-3,15-8); Kentucky def. LSU 3-0 (15-8,15-13,15-4). **Finals:** Kentucky def. Tennessee 3-1 (15-10,15-8,6-15,15-7).

1980

Pool Play: Miss. State def. LSU 2-0 (15-13,15-11); Kentucky def. Auburn 2-0 (15-7,15-8); Kentucky def. Miss. State 2-0 (15-3,15-2); LSU def. Auburn 2-0 (15-9,16-14); Miss. State def. Auburn 2-0 (15-11,18-16); Kentucky def. LSU 2-0 (15-4,15-10); Alabama def. Georgia 2-0 (15-12,15-5); Tennessee def. Ole Miss 2-1 (15-4,14-16,15-3); Tennessee def. Georgia 2-0 (15-8,15-3); Alabama def. Ole Miss 2-0 (15-7,15-12); Tennessee def. Alabama 2-1 (15-6,3-15,15-0); Georgia def. Ole Miss 2-0 (15-11,16-14). **Quarterfinals:** Alabama def. LSU 2-1 (15-10,12-15,15-6); Georgia def. Miss. State 2-1 (15-10,11-15,15-11). **Semifinals:** Kentucky def. Alabama 2-1 (15-4,3-15,15-10); Tennessee def. Georgia 2-1 (15-2,6-15,15-5). **Finals:** Kentucky def. Tennessee 2-1 (12-15,15-10,10-15).

1981

First Round: LSU def. Miss. State 3-0 (15-7,15-1,15-5); Alabama def. Georgia (no scores available); Tennessee def. Ole Miss 3-0 (15-2,15-13,15-8). **Semifinals:** Alabama def. Kentucky 3-2 (15-7,9-15,15-13,10-15,19-17); Tennessee def. LSU 3-0 (15-13,15-4,15-6). **Finals:** Tennessee def. Alabama 3-0 (15-12,15-7,15-0).

1982

First Round: Georgia def. Ole Miss 3-2 (14-16,15-10,15-10, 12-15,15-10); Kentucky def. Miss. State 3-0 (15-3,15-2,15-2). **Semifinals:** LSU def. Georgia 3-0 (15-11,15-11,15-10); Tennessee def. Kentucky 3-1 (10-15,15-12,15-8,15-12). **Consolation:** Kentucky def. Georgia 3-0 (15-2,15-8,15-5). **Finals:** Tennessee def. LSU 3-0 (15-12,15-10,15-7).

1983

First Round: Ole Miss def. Georgia 3-2 (15-6,12-15,9-15,15-11,15-13); Tennessee def. Miss. State 3-0 (15-1,15-3,15-7). **Semifinals:** Tennessee def. LSU 3-2 (7-15,15-13,11-15,15-11,15-6); Kentucky def. Ole Miss 3-0 (15-12,15-9,15-2). **Consolation:** LSU def. Ole Miss 3-0 (15-6,15-6,15-9). **Finals:** Kentucky def. Tennessee 3-1 (15-8,15-13,4-15,15-12)

1984

First Round: Georgia def. Florida 3-1 (15-10,15-4,14-16,15-9); LSU def. Ole Miss 3-1 (15-13,14-16,16-14,15-11); Tennessee def. Miss. State 3-0 (15-1,15-9,15-4). **Semifinals:** Kentucky def. Georgia 3-1 (18-16,7-15,15-4, 15-11); Tennessee def. LSU 3-0 (15-7,15-3,16-14).

Consolation: Georgia def. LSU 3-1 (9-15,15-8,15-11,15-4). **Finals:** Tennessee def. Kentucky 3-1 (10-15,15-5,15-6,15-13).

1985

First Round: Kentucky def. Tennessee 3-0 (15-7,15-8,15-4); LSU def. Miss. State 3-0 (15-2,15-13,15-1); Ole Miss def. Florida 3-1 (10-15,15-9,15-11, 15-10). **Semifinals:** Georgia def. Kentucky 3-0 (15-10,15-11,15-10); LSU def. Ole Miss 3-1 (15-9,12-15,15-11,15-11). **Consolation:** Kentucky def. Ole Miss 3-0 (15-13,15-11,15-1). **Finals:** Georgia def. LSU 3-1 (15-8,15-10,8-15,16-14).

1986

First Round: LSU def. Auburn 3-0 (15-4,15-6,15-9); Kentucky def. Ole Miss 3-0 (15-8,15-5,15-8); Georgia def. Miss. State 15-6,15-12,15-6); Florida def. Tennessee 3-2 (9-15,15-11,10-15,16-14,15-9). **Semifinals:** LSU def. Florida 3-0 (15-6,15-8,15-7); Georgia def. Kentucky 3-1 (15-10,9-15,15-8,15-13). **Consolation:** Kentucky def. Florida 3-0 (15-8,15-11,15-8). **Finals:** LSU def. Georgia 3-1 (15-10,12-15,15-9).

1987

First Round: Kentucky def. Miss. State 3-0 (15-1,15-7,15-0); Tennessee def. Georgia 3-1 (1-15,15-10,15-9,18-16); Florida def. Ole Miss 3-0 (15-7,15-3,15-3); LSU def. Auburn 3-0 (15-8,15-1,15-9). **Semifinals:** Kentucky def. Tennessee 3-0 (15-8,18-16,15-5); Florida def. LSU 3-0 (15-8,15-6,15-1). **Finals:** Kentucky def. Florida 3-0 (15-8,15-3,15-9).

1988

Semifinals: Tennessee def. Florida 3-0 (15-10,16-14,15-13); Kentucky def. LSU 3-1 (8-15,15-2,15-11,15-2). **Finals:** Kentucky def. Tennessee 3-0 (15-9,15-12,15-8).

1989

Semifinals: Kentucky def. Georgia 3-1 (15-7,7-15,15-11,15-9); LSU def. Tennessee 3-0 (15-2,15-9,15-6). **Finals:** LSU def. Kentucky 3-0 (15-13,16-14,15-11).

1990

First Round: Alabama def. Miss. State 3-2 (15-8,15-4,13-15,4-15,15-10). **Second Round:** Georgia def. Tennessee 3-0 (15-8,15-11,15-12); Florida def. Auburn 3-1 (16-14,15-7,11-15,15-6); Ole Miss def. Kentucky 3-1 (4-15,15-4,15-12,15-2); LSU def. Alabama 3-1 (11-15,15-5,15-8,15-6). **Semifinals:** LSU def. Florida 3-0 (15-11,15-9,15-9); Georgia def. Ole Miss 3-1 (15-4,11-15,15-5,15-9). **Finals:** LSU def. Georgia 3-2 (9-15,16-14,15-8, 9-15,15-2).

1991

First Round: Ole Miss def. S. Carolina 3-1 (13-15,15-6,15-9,15-12); Miss. State def. Tennessee 3-1 (15-10,14-16,15-10,15-12); Georgia def. Alabama 3-0 (15-4,15-6,15-7); Kentucky def. Auburn 3-1 (9-15,15-4,15-14,15-10). **Second Round:** LSU def. Miss. State 3-0 (15-5,15-3,15-1); Florida def. Ole Miss 3-0 (15-4,15-6,15-9). **Semifinals:** LSU def. Kentucky 3-1 (15-6,14-16,15-4,15-8); Florida def. Georgia 3-0 (15-5,15-3,15-8). **Finals:** LSU def. Florida 3-0 (15-11,15-11,15-0)

Tournament Results



1992

First Round: Miss. State def. Alabama 3-1 (17-15,15-9,4-15,15-9); Ole Miss def. S. Carolina 3-1 (15-13,15-7,13-15,15-12); Kentucky def. Auburn 3-1 (15-12,15-7,15-17,15-3); Georgia def. Tennessee 3-0 (15-5,15-10,15-0). **Second Round:** LSU def. Miss. State 3-0 (15-4,15-13,15-3); Florida def. Ole Miss 3-0 (15-2,15-1,15-1). **Semifinals:** LSU def. Kentucky 3-1 (12-15,15-13, 16-14,15-4); Florida def. Georgia 3-0 (15-12,15-8,15-3). **Finals:** Florida def. LSU 3-1 (9-15,15-11,15-11,15-2)

1993

First Round: S. Carolina def. Ole Miss 3-1 (15-6,13-15,15-10,15-10); Alabama def. Miss. State 3-1 (15-12,15-10,6-15,15-8); Kentucky def. Auburn 3-1 (15-6,15-6,10-15,15-6); LSU def. Tennessee 3-0 (15-13,17-15, 15-3). **Second Round:** Georgia def. S. Carolina 3-0 (15-4,15-1,16-14); Florida def. Alabama 3-0 (15-10,15-6,15-0). **Semifinals:** Georgia def. Kentucky 3-0 (15-12,15-10,17-15); Florida def. LSU 3-1 (15-9,10-15,15-9, 15-6). **Finals:** Florida def. Georgia 3-1 (15-10,8-15,15-12,15-13).

1994

First Round: Kentucky def. LSU 3-2 (12-15,14-16,15-7,15-9,16-14); Auburn def. Tennessee 3-0 (15-10,15-11,15-8); S. Carolina def. Miss. State 3-0 (15-6,15-4,15-5). **Second Round:** Georgia def. Ole Miss 3-0 (15-6,15-9,15-2); Kentucky def. Arkansas 3-2 (15-10,10-15,15-4,10-15,15-9); Florida def. Auburn 3-0 (15-5,15-9,15-6); S. Carolina def. Alabama 3-0 (17-15,15-7,15-7). **Semifinals:** Georgia def. Kentucky 3-0 (15-5,15-7,16-14); Florida def. S. Carolina 3-0 (15-9,15-4,15-5). **Finals:** Florida def. Georgia 3-1 (15-12,14-16,15-6,15-10).

1995

First Round: Ole Miss def. Kentucky 3-2 (7-15,15-10,15-9,9-15,15-13); S. Carolina def. Miss. State 3-0 (15-9,16-14,15-10); Alabama def. Tennessee 3-0 (15-4, 15-6,15-11). **Second Round:** Auburn def. Georgia 3-1 (15-17,15-11,15-9,16-14); Arkansas def. Ole Miss 3-0 (15-11,15-8,15-11); S. Carolina def. LSU 3-1 (8-15,15-2,15-10,15-7); Florida def. Alabama 3-0 (15-11,15-3,15-4).

Semifinals: Arkansas def. Auburn 3-2 (7-15,15-11,15-8,14-16,15-9); Florida def. S. Carolina 3-0 (15-13,15-9,15-9). **Finals:** Florida def. Arkansas 3-0 (15-8,15-12,15-4).

1996

First Round: Georgia def. LSU 3-1 (15-12,6-15,15-5,15-10); Alabama def. Kentucky 3-2 (13-15,15-10,15-7,10-15,16-14); Miss. State def. Tennessee 3-1 (15-7,3-15,15-10,15-5). **Second Round:** Florida def. Georgia 3-0 (15-6,15-7,15-6); Auburn def. Alabama 3-0 (15-9,15-3,15-11); Arkansas def. Miss. State 3-0 (15-9,15-5,15-12); S. Carolina def. Ole Miss 3-2 (15-12,11-15,12-15,15-9,15-9). **Semifinals:** Florida def. Auburn 3-0 (15-12,15-8,15-4); Arkansas def. S. Carolina 3-2 (15-12,12-15,13-15,15-12,15-11). **Finals:** Florida def. Arkansas 3-1 (15-4,11-15,15-10,15-10).

1997

First Round: Tennessee def. Alabama 3-0 (15-7,16-14,15-9); Georgia def. LSU 3-0 (15-2,15-11,15-5); Kentucky def. MSU 3-1 (15-12, 15-11, 7-15, 15-6). **Second Round:** S. Carolina def. Ole Miss 3-0 (15-2, 18-16,15-6); Arkansas def. Tennessee 3-0 (15-10, 15-3, 15-5); Georgia def. Auburn 3-1 (15-6, 7-15, 15-8, 17-15); Florida def. Kentucky 3-0 (15-5, 15-6, 15-7). **Semifinals:** Arkansas def. S. Carolina 3-0 (15-12, 15-6, 16-14); Florida def. Georgia 3-1 (15-2, 17-15, 15-2, 15-10). **Finals:** Arkansas def. Florida 3-0 (15-7, 15-7, 17-15).

1998

First Round: Tennessee def. Alabama 3-0 (15-10, 16-14, 15-11); Kentucky def. LSU 3-1 (14-16, 16-14, 15-6, 15-9); Georgia def. Ole Miss 3-1 (15-13, 15-7, 11-15, 15-9). **Quarterfinals:** South Carolina def. Miss. State 3-0 (15-13, 15-11, 15-7); Florida def. Kentucky 3-0 (15-11, 15-8, 15-6); Arkansas def. Tennessee 3-0 (15-7, 15-6, 15-9); Auburn def. Georgia 3-2 (15-3, 13-15, 1-15, 15-10, 17-15). **Semifinals:** Arkansas def. South Carolina 3-0 (15-4, 15-5, 15-2); Florida def. Auburn 3-0 (15-3, 15-3, 15-0). **Finals:** Florida def. Arkansas 3-1 (15-9, 15-13, 6-15, 16-14).

1999

First Round: Kentucky def. South Carolina 3-0 (15-6, 15-8, 16-14); Arkansas def. Alabama 3-1 (15-8, 8-15, 15-11, 15-13); Florida def. LSU 3-0 (15-8, 15-7, 15-7); Tennessee def. Auburn 3-1 (15-11, 15-8, 14-16, 15-3). **Semifinals:** Arkansas def. Kentucky 3-1 (15-10, 15-5, 1-

15, 15-10); Florida def. Tennessee 3-0 (15-10, 15-5, 15-2). **Finals:** Florida def. Arkansas 3-1 (6-15, 15-9, 15-1, 15-2).

2000

First Round: Tennessee def. Arkansas 3-0 (15-8, 15-13, 15-8); Georgia def. South Carolina 3-2 (13-15, 15-10, 18-16, 7-15, 15-13); Florida def. Ole Miss 3-0 (15-2, 15-7, 15-4); LSU def. Alabama 3-1 (7-15, 15-12, 15-11, 15-7). **Semifinals:** Florida def. Tennessee 3-0 (15-10, 15-13,15-9); LSU def. Georgia 3-0 (15-11, 15-10, 15-11). **Finals:** Florida def. LSU 3-0 (15-5, 15-3, 15-10).

2001

First Round: Tennessee def. Arkansas 3-0 (15-8, 15-13, 15-8); Georgia def. South Carolina 3-2 (13-15, 15-10, 18-16, 7-15, 15-13); Florida def. Ole Miss 3-0 (15-2, 15-7, 15-4); LSU def. Alabama 3-1 (7-15, 15-12, 15-11, 15-7). **Semifinals:** Florida def. Tennessee 3-0 (15-10, 15-13,15-9); LSU def. Georgia 3-0 (15-11, 15-10, 15-11). **Finals:** Florida def. LSU 3-0 (15-5, 15-3, 15-10).

2002

First Round: Florida def. Georgia 3-0 (30-25, 30-21, 30-17); Arkansas def. Kentucky 3-0 (30-28, 30-19, 30-19); Alabama def. LSU 3-2 (30-22, 23-30, 30-27, 23-30, 15-11); South Carolina def. Tennessee 3-2 (31-29, 20-30, 17-30, 30-27, 15-9). **Semifinals:** Florida def. Alabama 3-0 (30-22, 30-23, 30-16); Arkansas def. South Carolina 3-1 (28-30, 30-28, 30-28, 30-24). **Finals:** Florida def. Arkansas 3-2 (27-30, 28-30, 30-19, 30-16, 19-17).

2003

First Round: Alabama def. South Carolina 3-0 (30-24, 30-20, 30-23); Arkansas def. Tennessee 3-0 (30-23, 30-28, 30-25); Florida def. Kentucky 3-0 (30-19, 30-19, 30-17); Georgia def. LSU 3-1 (30-22, 30-24, 24-30, 30-18). **Semifinals:** Arkansas def. Alabama 3-0 (30-21, 30-20, 30-14); Florida def. Georgia 3-0 (30-19, 30-20, 30-27). **Finals:** Florida def. Arkansas 3-1 (30-18, 27-30, 30-22, 30-21).

2004

First Round: Florida def. Kentucky 3-0 (30-20, 30-19, 30-19); Tennessee def. Georgia 3-2 (25-30, 30-20, 30-16, 29-31, 16-17); Arkansas def. LSU 3-0 (30-17, 30-28, 30-27); Alabama def. South Carolina (30-25, 30-22, 30-22). **Semifinals:** Florida def. Tennessee 3-0 (30-23, 30-24, 30-23); Arkansas def. Alabama 3-0 (30-16, 30-21, 30-24). **Finals:** Florida def. Arkansas 3-0 (30-16, 30-19, 30-15)

SEC Tournament Champions

Year	Tournament Champion	Tournament Runner-Up	Tournament Site
1979	Kentucky	Tennessee	Tuscaloosa, Ala.
1980	Kentucky	Tennessee	Lexington, Ky.
1981	Tennessee	Alabama	Knoxville, Tenn.
1982	Tennessee	LSU	Baton Rouge, La.
1983	Kentucky	Tennessee	Lexington, Ky.
1984	Tennessee	Kentucky	Knoxville, Tenn.
1985	Georgia	LSU	Oxford, Miss.
1986	LSU	Georgia	Gainesville, Fla.
1987	Kentucky	Florida	Baton Rouge, La.
1988	Kentucky	Tennessee	Pensacola, Fla.
1989	LSU	Kentucky	Pensacola, Fla.
1990	LSU	Georgia	Mobile, Ala.
1991	LSU	Florida	Mobile, Ala.
1992	Florida	LSU	Birmingham, Ala.
1993	Florida	Georgia	Birmingham, Ala.
1994	Florida	Georgia	Gainesville, Fla.
1995	Florida	Arkansas	Baton Rouge, La.
1996	Florida	Arkansas	Columbia, S.C.
1997	Arkansas	Florida	Athens, Ga.
1998	Florida	Arkansas	Fayetteville, Ark.
1999	Florida	Arkansas	Knoxville, Tenn.
2000	Florida	LSU	Gainesville, Fla.
2001	Florida	Arkansas	Knoxville, Tenn.
2002	Florida	Arkansas	Fayetteville, Ark.
2003	Florida	Arkansas	Columbia, S.C.



SEC in the NCAA Tournament

Composite NCAA Record

Team	App.	Record	Highest Finish (Year)	Last Appearance
Arkansas	5	6-6 (.500)	Regionals (1998)	2002
Florida	13	39-14 (.736)	National Finals (2003)	2003
Georgia	7	5-7 (.417)	Regionals (1985, 86)	1995
LSU	6	10-6 (.625)	National Semifinals (1990, 91)	1992
Kentucky	6	7-6 (.534)	Regional Finals (1983, 87)	1994
South Carolina	6	4-6 (.400)	Second Round (1995, 97, 2000, 02)	2002
Tennessee	6	4-6 (.400)	Regional Finals (1982, 84)	2000

Year-By-Year Results

<p>1981 <u>First Round</u> Purdue def. Tennessee 3-0 (15-13,15-10,15-10)</p> <hr/> <p>1982 <u>First Round</u> Tennessee def. Northwestern 3-2 (15-12,7-15,4-15,15-8,15-9) <u>Midwest Regional</u> Southern Cal def. Tennessee 3-0 (15-11,15-7,15-8)</p> <hr/> <p>1983 <u>First Round</u> Tennessee def. Florida State 3-2 (12-15,12-15,15-1,15-10,15-8) Kentucky def. North Carolina 3-0 (15-2,15-13,15-12) <u>South Region Semifinals</u> Kentucky def. Texas 3-2 (15-7,6-15,14-16,15-13,15-10) Hawaii def. Tennessee 3-0 (15-9,15-8,15-11) <u>South Region Finals</u> Hawaii def. Kentucky 3-1 (10-15,18-17,15-9,15-10)</p> <hr/> <p>1984 <u>First Round</u> Tennessee def. E. Kentucky 3-0 (15-2,15-6,15-9) <u>South Regional</u> Texas def. Tennessee 3-1 (15-6,15-7,10-15,15-6)</p> <hr/> <p>1985 <u>First Round</u> Georgia def. Florida State 3-0 (15-6,15-1,15-10) <u>South Regional</u> UCLA def. Georgia 3-0 (15-3,15-5,15-8)</p> <hr/> <p>1986 <u>First Round</u> LSU def. Arizona 3-2 (15-12,5-15,15-12,12-15,15-9) Georgia def. Texas A&M 3-1 (5-15,15-4,15-10,15-6) <u>South Region Semifinals</u> LSU def. Texas-Arlington 3-0 (15-7,15-5,15-9) Texas def. Georgia 3-0 (15-9,15-8,15-11) <u>South Region Finals</u> Texas def. LSU 3-0 (15-3,15-11,15-13)</p> <hr/> <p>1987 <u>First Round</u> Florida def. LSU 3-2 (5-12,7-15,15-10,10-15,15-10) Kentucky def. N. Carolina 3-0 (15-13,15-5,15-8) <u>South Region Semifinals</u> Kentucky def. Texas-Arlington 3-1 (13-15,15-13,15-11,18-16) Texas def. Florida 3-0 (15-9,15-4,15-3) <u>South Region Finals</u> Texas def. Kentucky 3-1 (9-15,15-12,15-9,15-4)</p>	<p>1988 <u>First Round</u> Kentucky def. New Mexico 3-2 (16-14,15-1,12-15,9-15,15-9) <u>South Regional</u> Texas-Arlington def. Kentucky 3-1 (7-15,15-13,13-15,4-15)</p> <hr/> <p>1989 <u>First Round</u> LSU def. Houston 3-2 (13-15,15-12,8-15,15-7,15-3) <u>South Regional</u> Texas-Arlington def. LSU 3-2 (13-15,11-15,15-11,15-13,15-5)</p> <hr/> <p>1990 <u>First Round</u> Kentucky def. Florida State 3-1 (15-12,15-10,10-15,15-10) LSU def. Louisville 3-0 (15-9,15-1,15-7) <u>South Region Semifinals</u> LSU def. Texas Tech 3-0 (15-1,15-12,15-5) Texas def. Kentucky 3-0 (15-4,15-5,15-5) <u>South Region Finals</u> LSU def. Texas 3-2 (8-15,4-15,15-10,15-11,17-15) <u>Final Four</u> UCLA def. LSU 3-0 (15-13,15-10,15-6)</p> <hr/> <p>1991 <u>First Round</u> LSU def. Houston 3-0 (15-5,15-5,16-14) Texas Tech def. Georgia 3-0 (15-5,15-6,15-4) Florida def. Louisville 3-0 (15-5,15-13,15-10) <u>South Region Semifinals</u> Florida def. Texas 3-1 (3-15,15-10,15-9,15-5) LSU def. Texas Tech 3-0 (15-6,15-7,15-10) <u>South Region Finals</u> LSU def. Florida 3-1 (15-10,15-10,12-15,15-13) <u>Final Four</u> Long Beach St. def. LSU 3-1 (15-13,6-15,15-10,15-13)</p> <hr/> <p>1992 <u>First Round</u> Florida def. Florida St. 3-0 (15-9,15-3,15-10) Kentucky def. Duke 3-1 (15-6,15-11,7-15,15-11) Texas def. Georgia 3-0 (15-12,15-2,10-15,15-8) LSU def. Texas Tech 3-0 (15-7,15-8,15-5) <u>South Region Semifinals</u> Texas def. LSU 3-1 (15-9,13-15,15-12,15-4) Florida def. Kentucky 3-0 (15-13,15-10,16-14) <u>South Region Finals</u> Florida def. Texas 3-2 (8-15,14-16,15-6,15-2,15-11) <u>Final Four</u> UCLA def. Florida 3-0 (15-12,15-12,15-10)</p>	<p>1993 <u>First Round</u> Tennessee def. Sam Houston St. 3-1 (15-12,5-15,15-6,15-9) <u>Second Round</u> Florida def. Houston 3-0 (15-10,15-10,15-9) Duke def. Kentucky 3-0 (15-12,15-9,15-12) Georgia def. Tennessee 3-1 (15-3,15-10,5-15,15-11) <u>South Region Semifinals</u> Florida def. Georgia 3-0 (16-14,15-9,15-13) <u>South Region Finals</u> Florida def. Texas 3-2 (15-11,15-8,11-15,12-15,15-10) <u>Final Four</u> Long Beach St. def. Florida 3-0 (15-10,15-6,15-3)</p> <hr/> <p>1994 <u>First Round</u> Georgia def. App. State 3-0 (15-6,15-4,15-5) <u>Second Round</u> Duke def. Georgia 3-0 (15-11,15-3,15-4) Florida def. Texas 3-0 (15-13,15-8,17-15) <u>South Region Semifinals</u> Houston def. Florida 3-1 (13-15,15-6,15-11,15-4)</p> <hr/> <p>1995 <u>First Round</u> South Carolina def. Hofstra 3-0 (15-7,15-10,15-1) Georgia def. Marshall 3-0 (15-7,15-3,15-3) <u>Second Round</u> Florida def. Texas Tech 3-2 (6-15,13-15,15-9,15-5,18-16) Illinois def. Georgia 3-1 (15-10,15-11,10-15,15-9) Texas A&M def. South Carolina 3-0 (15-6,17-15,15-12) <u>East Regional Semifinals</u> Florida def. Texas A&M 3-0 (15-4,15-13,15-4) <u>East Regional Finals</u> Texas def. Florida 3-2 (9-15,15-7,15-8,10-15,15-13)</p> <hr/> <p>1996 <u>First Round</u> Arkansas def. Rhode Island 3-2 (15-12,15-8,12-15,9-15,15-11) <u>Second Round</u> Nebraska def. Arkansas 3-1 (15-9,12-15,15-7,15-7) Florida def. Illinois State 3-0 (16-14,16-14,15-3) <u>Central Regional Semifinals</u> Florida def. Ohio State 3-2 (15-8,14-16,13-15,15-12,15-6) <u>Central Regional Finals</u> Florida def. Michigan State 3-1 (7-15,15-7,15-9,17-15) <u>Final Four</u> Hawaii def. Florida 3-0 (11-15,8-15,9-15)</p>
--	---	---

SEC in the NCAA Tournament



1997

First Round

Arkansas def. Arkansas-Little Rock 3-0 (15-11, 15-3, 15-3)

South Carolina def. Illinois State 3-0 (15-7, 15-7, 15-10)

Second Round

Noire Dame def. Arkansas 3-1 (9-15, 15-7, 15-10, 16-14)

Texas def. South Carolina 3-0 (15-11, 15-3, 15-10)

Florida def. South Florida 3-0 (15-12, 15-9, 15-5)

Central Regional Semifinals

Florida def. Washington State 3-0 (15-10, 15-6, 15-8)

Central Regional Finals

Florida def. Wisconsin 3-2 (8-15, 14-16, 15-7, 15-11, 15-5)

Final Four

Penn State def. Florida 3-0 (15-11, 15-12, 15-13)

1998

First Round

Florida def. Chattanooga 3-0 (15-1, 15-3, 15-5)

Arkansas def. New Hampshire 3-0 (15-3, 15-0, 15-11)

Colorado State def. South Carolina 3-2 (15-6, 7-15, 7-15, 15-10, 12-15)

Second Round

Florida def. Ohio State 3-1 (15-5, 13-15, 16-14, 15-12)

Arkansas def. Indiana 3-0 (15-8, 15-5, 15-4)

East Region Semifinals

at Gainesville, Fla.

Florida def. Southern California 3-1 (15-13, 12-15, 15-9, 15-9)

Hawaii def. Arkansas 3-0 (15-13, 15-9, 15-9)

East Region Finals

at Gainesville, Fla.

Florida def. Hawaii

3-2 (11-15, 4-15, 15-10, 15-4, 15-7)

Final Four

at Madison, WI

Long Beach State def. Florida 3-0 (15-2, 15-8, 15-10)

1999

First Round

Florida def. Liberty 3-0 (15-4, 15-1, 15-2)

Arkansas def. Georgetown 3-1 (15-3, 10-15, 15-1, 15-6)

Second Round

Florida def. Illinois 3-2 (15-8, 7-15, 16-14, 9-15, 15-12)

Long Beach State def. Arkansas 3-0 (15-6, 15-6, 15-11)

East Region Semifinals

at Stockton, Calif.

Florida def. BYU

3-0 (15-12, 15-9, 15-9)

Hawaii defeated Arkansas 3-0 (15-13, 15-8, 15-10)

East Region Finals

at Stockton, Calif.

Pacific def. Florida 3-0 (15-8, 16-14, 15-8)

2000

First Round

Florida def. Arkansas-Little Rock 3-0 (15-2, 15-6, 15-4)

South Carolina def. Georgie Washington 3-0 (15-13, 15-10, 15-3)

Washington St. def. Tennessee 3-0 (15-10, 15-1, 15-8)

Second Round

Florida def. SE Missouri State 3-0 (15-1, 15-7, 15-5)

Nebraska def. South Carolina

3-2 (15-11, 9-15, 13-15, 15-12, 15-13)

Pacific Region Semifinals

at Los Angeles, Calif.

Southern Cal def. Florida

3-0 (15-13, 15-13, 15-11)

2001

First Round

Kansas State def. Arkansas

3-2 (30-15, 18-30, 27-30, 30-18, 15-8)

Florida def. Florida A&M

3-0 (30-20, 30-13, 30-22)

North Carolina def. South Carolina

3-1 (30-25, 30-32, 30-25, 30-21)

Second Round

Florida def. Fl. International

3-0 (30-23, 31-29, 30-26)

Region Semifinals

at Lincoln, Neb.

Florida def. Pepperdine

3-0 (30-28, 30-25, 30-16)

Region Finals

at Lincoln, Neb.

Nebraska def. Florida

3-2 (30-18, 30-24, 28-30, 25-30, 15-13)

2002

First Round

Florida def. UCF

3-0 (30-14, 30-20, 30-21)

South Carolina def. American

3-1 (30-10, 30-28, 23-30, 30-19)

Second Round

Florida def. South Florida

3-1 (35-33, 30-24, 20-30, 30-18)

North Carolina def. South Carolina

1-3 (23-30, 30-28, 26-30, 23-30)

at Gainesville, Fla.

Florida def. Temple

3-0 (30-15, 30-27, 30-14)

Region Finals

at Gainesville, Fla.

Florida def. Washington State

3-1 (27-30, 30-19, 30-25, 30-16)

Final Four

at New Orleans, La.

Southern California def. Florida

1-3 (30-24, 25-30, 26-30, 24-30)

2003

First Round

Arkansas def. Southwest Missouri State

3-1 (30-26, 30-28, 16-30, 30-28)

Florida def. Georgia Southern

3-0 (30-18, 30-18, 30-21)

Second Round

Kansas State def. Arkansas

0-3 (26-30, 27-30, 21-30)

Florida def. Central Florida

3-0 (30-19, 30-26, 30-21)

Region Semifinals

at Gainesville, Fla.

Florida def. Colorado State

3-0 (30-13, 30-22, 30-26)

Region Finals

at Gainesville, Fla.

Florida def. Penn State

3-0 (30-21, 30-24, 30-26)

Final Four

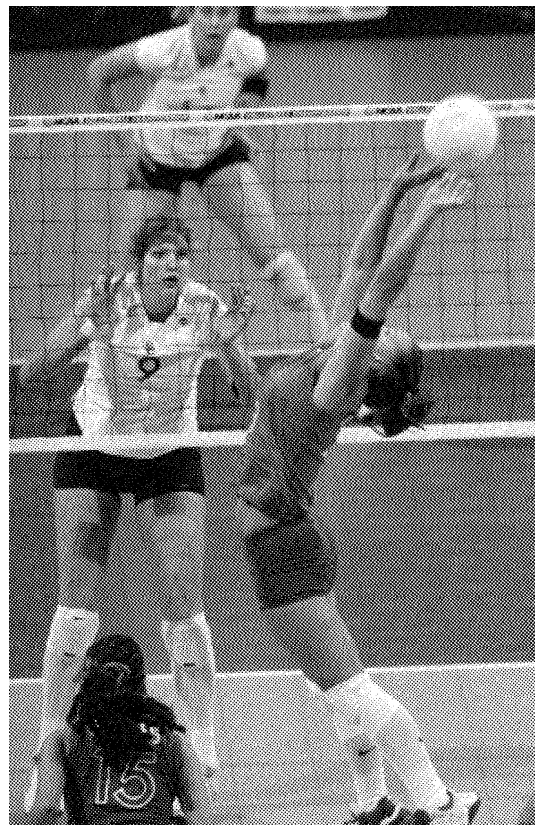
at Dallas, Texas

Florida def. Hawaii

3-1 (30-28, 30-28, 23-30, 30-28)

Southern California def. Florida

3-1 (25-30, 30-27, 30-19, 30-26)



Florida's Lauren Moscovic lead her team to a birth in the National Championship Game against Southern Cal in 2003.

**1979**

Tanya Sparks, LSU
Kim McFall, UM
Alfreda Booker, UT
Lisa Huntley, UT
Ingrid Muefler, UT

1980

Kim Clay, UK
Mary Freitag, UK
Sandy Glasscock, UK
Tanya Haave, UT
Lisa Huntley, UT

1981

Beverly Robinson, UA
Sue Ushela, UG
Marsha Bond, UK
Jane Miller, UK
Leah Bennett, LSU
Lara Shreve, UM
Marie Therese Gillcrist, UT
Robin Maine, UT
Lezil McPhail, UT

1982

Jane Lembke, UG
Sue Ushela, UG
Marsha Bond, UK
Kim Clay, UK
Leah Bennett, LSU
Claudia Lee, LSU
Sue Sharp, UM
Elizabeth Chavez, UT
April Chapple, UT
Bonnie Kenny, UT
Robin Maine, UT
Beverly Robinson, UT

1983

Laurie Henderson, UG
Karen Kelly, UG
Marsha Bond, UK
Lori Erpenbeck, UK
Karolyn Kirby, UK
Leah Bennett, LSU
Maureen Marek, LSU
Paula Rideau, LSU
Sue Sharp, UM
Betsy Chavez, UT
Robin Maine, UT
Beverly Robinson, UT

1984

Karen Kelly, UG
Lori Erpenbeck, UK
Kim Martinson, UK
Leah Bennett, LSU
Tina Burcham-Seals, MSU
April Chapple, UT

1985

Wendy Stevenson, UF
Shelly Gross, UG
Jenny McDowell, UG
Detra Brown, LSU
Wendy Stammer, LSU
Angela Scott, UM

1986

Robin June, UF
Lyra Vance, UF
Shelley Gross, UG
Diane Rohde, UG
Jenny McDowell, UG
Lisa Bokovoy, UK

Irene Smyth, UK
Detra Brown, LSU
Wendy Stammer, LSU
Julie Link, UM
Laurie Caraher, UT

1987

Connie Wolter, UF
Lisa Bokovoy, UK
Lisa Dausman, UK
Annette Ewasek, UK
Lisa Smith, LSU
Dianne Shoemaker, UT

1988

First Team
Kristi Reinert, UF
Lisa Bokovoy, UK
Laura Linder, UK
Sibel Gurkan, LSU
Stephanie Ehlers, UT
Dianne Shoemaker, UT
Second Team
Terri Duckworth, AU
Antje Seitz, AU
Connie Wolter, UF
Christi Lord, UG
Kim Thompson, UK
Monica Freitas, LSU

1989

Christa Faris, UG
Kelli Ogden, UG
Stephanie Green, UK
Mary Jones, UK
Nyla Shepherd, LSU
Julie Stempel, LSU

1990

Kristye Hall, UA
Gina Thomas, AU
Steffi Legall, UF
Christie Lord, UG
Cathy DeBuono, UK
Laura Linder, UK
Monique Adams, LSU
Dani Reis, LSU
Julie Stempel, LSU
Michelle Whitby-York, UM
Kristy Dobson, UT

1991

Suzanne Hughes, UF
Steffi Legall, UF
Gudula Staub, UF
Jodie Kruse, UG
Jill Moore, UG
Eunice Thomas, UK
Monique Adams, LSU
Angie Miller, LSU
Dani Reis, LSU
Nyla Shepherd, LSU
Julie Stempel, LSU
Tamala Brightman, UT

1992

First Team
Gina Thomas, AU
Heidi Anderson, UF
Suzanne Hughes, UF
Gudula Staub, UF
Jodie Kruse, UG
Priscilla Pacheco, UG
Jane Belanger, UK
Krista Robinson, UK
Eunice Thomas, UK
Angie Miller, LSU

Danie Reis, LSU
Tamala Brightman, UT
Second Team
Mavis Reed, UA
Lori Russell, AU
Meg Fitzgerald, UF
Aycan Gokberk, UF
Hadli Anstine, UG
Nikki Nicholson, UG
Sue Novak, UG
Vanessa Hackett, LSU
Tess Sulatycki, LSU
Kate Ditolla, UM
Aimee York, MSU
Libby Ralston, USC

1993

First Team
Aycan Gokberk, UF
Keri Uptegraph, UF
Hadli Anstine, UG
Ashley Cook, UG
Jodi Kruse, UG
Nikki Nicholson, UG
Priscilla Pacheco, UG
Jane Belanger, UK
Eunice Thomas, UK
Luciana Reis, LSU
Vanessa Hackett, LSU
Tamala Brightman, UT
Second Team
Mavis Reed, UA
Laura Coakley, AU
Missy Aggert, UF
Meg Fitzgerald, UF
Ashley Mullis, UF
Molly Dreisback, UK
Ann Hall, UK
Genevieve Shy, UM
Ashlye Davis, MSU
Jennifer Guess, USC
Joanne Moore, LSU

1994

First Team
Nina Foster, UA
Krystal Osborne, ARK
Missy Aggert, UF
Ashley Mullis, UF
Julie Stanhope, UF
Jennifer Wood, UF
Hadli Anstine, UG
Nikki Nicholson, UG
Priscilla Pacheco, UG
Molly Dreisbach, UK
Nicolle Carter, MSU
Amy Iannocari, USC
Second Team
Mavis Reed, UA
Jaimie Torromeo, ARK
Allyson Beecroft, AU
Rani Whitson, AU
Mara Eglitis, UK
Tiffany Miller, LSU
Luciana Santana, LSU
Julia Sitarz, UM
Kori Ermigarat, USC
Katie Gerst, USC
Heather Larkin, USC
Sonja Thomas, UT



1995

First Team

Nina Foster, UA
Denise Baez, ARK
Krystal Osborne, ARK
Missy Aggertt, UF
Aycan Gokberk, UF
Ashley Mullis, UF
Jenny Wood, UF
Hadli Anstine, UG
Nikki Nicholson, UG
Molly Dreisback, UK
Luciana Santana, LSU
Heather Larkin, USC

Second Team

Holly Richards, UA
Rani Whitson, AU
Meg Fitzgerald, UF
Cassie Brill, UG
Mara Eglitis, UK
Jackie Bode, LSU
Carmis Franks, LSU
Genevieve Shy, UM
Jeniver Koutnik, MSU
Ashley Edlund, USC
Kori Ermigarat, USC
Kelly Hamilton, UT

1996

First Team

Denise Baez, ARK
Tina Rico, ARK
Allyson Beecroft, AU
Rani Whitson, AU
Nina Foster, UF
Aurymar Rodriguez, UF
Nikki Shade, UF
Jenny Wood, UF
Gina Heustis, UK
Carmis Franks, LSU
Ashley Edlund, USC
Heather Larkin, USC

Second Team

Monica Davis, UA
Kim Storey, ARK
Piper Craig, AU
Julie Stanhope, UF
Rebecca Dady, UG
Lital Sisso, UG
Jenny Muzzey, UK
Randi Winn, LSU
Genevieve Shy, UM
Jennifer Shupe, MSU
Cindy Robarge, USC
Kelly Hanlon, UT

1997

First Team

Jessica Field, ARK
Tina Rico, ARK
Yarleen Santiago, ARK
Jaunelle Hamilton, AU
Brooke McCarley, AU
Nina Foster, UF
Jenny Manz, UF
Aurymar Rodriguez, UF
Nikki Shade, UF
Kathy Vis, UG
Heather Larkin, USC
Ashley Edlund, USC

Second Team

Monica Davis, UA
Kim Storey, ARK
Krystal Osborne, ARK
Piper Craig, AU
Rebecca Dady, UG
Lital Sisso, UG

LaTanya Webb, UK
Emily Boken, LSU
Susan Argue, UM
Christine Owen, MSU
Crystal Moore, USC
Kim Obiala, UT

1998

First Team

Jessica Field, ARK
Jaime Rohme, ARK
Kim Storey, ARK
Jaunelle Hamilton, AU
Brooke McCarley, AU
Jenni Keene, UF
Jenny Manz, UF
Jennifer Sanchez, UF
Heather Wright, UF
Kathy Vis, UGA
Ashley Edlund, USC
Cally Plummer, USC

Second Team

Yarleen Santiago, ARK
Ning Zhao, ARK
Piper Craig, AU
Jeni Jones, UF
Rebecca Dady, UGA
Mindi Westfall, UGA
Jaclyn Homan, UK
LaTanya Webb, UK
Meg Norwood, LSU
Christine Owen, MSU
Chris Jestila, UT
Ariana Wilson, UT

1999

First Team

Michelle Green, UA
Brooke McCarley, AU
Januelle Hamilton, AU
Yarleen Santiago, ARK
Ning Zhao, ARK
Jenny Whitehead, UF
Heather Wright, UF
Jen Sanchez, UF
Jenny Manz, UF
Kelly Thompson, LSU
Megan Davis, LSU
Ariana Wilson, UT

Second Team

Monica Morales, UA
Ashanti Taylor, ARK
Libby Wendell, ARK
Nicole McCray, UF
Rebecca Dady, UG
Stacy Buerger, UG
Katie Eiserman, UK
Bernadette Dwyer, USC
Danika Taylor, USC
Erica Brez, UT
Stephanie Knight, UT
Erica Lear, UT

2000

First Team

Michelle Green, UA
Eftila Tenellari, ARK
Libby Windell, ARK
Benavia Jenkins, ARK
Nicole McCray, UF
Niki Hartley, UF
Aury Cruz, UF
Stacy Buerger, UG
Berna Dwyer, USC
Megan Hosp, USC
Cally Plummer, USC
Ariana Wilson, UT

Second Team

Monica Morales, UA
Jaunelle Hamilton, AU
Michelle Coens, ARK
Kris Bova, UF
Erin Gornes, UG
Megan Weiskircher, UK
Meagan Davis, LSU
Kira Zschau, UM
Brianna Smedley, MSU
Sam Alban, USC
Janelle Hester, UT
Erica Lear, UT

2001

First Team

Eftila Tenellari, ARK
Libby Windell, ARK
Benavia Jenkins, UF
Nicole McCray, UF
Jacque Robinson, UF
Aury Cruz, UF
Kris Bova, UF
Megan Davis, LSU
Megan Hosp, USC
Cally Plummer, USC
Erica Lear, Tennessee
Ariana Wilson, UT

Second Team

Erin Heffner, UA
Jennifer Bibber, UA
Michelle Coens, ARK
Anna Velikanova, ARK
Jennifer Haaser, ARK
Niki Hartley, UF
Stacy Buerger, UG
April Barnhorst, UK
Lauren Cuyler, LSU
Jennifer Hampton, LSU
Berna Dwyer, USC
Nadia Sefferovich, USC
Janelle Hester, UT

2002

First Team

Libby Windell, ARK
Aury Cruz, UF
Benavia Jenkins, UF
Nicole McCray, UF
Niece Curry, USC
Megan Hosp, USC

Second Team

Erin Heffner, UA
Sara Kincaid, ARK
Jacque Robinson, UF
Jennifer Hampton, LSU
Berna Dwyer, USC
Cally Plummer, USC

2003

First Team

Sara Kincaid, ARK
Aury Cruz, UF
Erin Heffner, UA
Jane Collymore, UF
Benavia Jenkins, UF
Robert Tamauskaitė, ARK
Jenni Casper, UK

Second Team

Julia Petruschke, UG
Jennifer Haaser, ARK
Sherri Williams, UF
Regan Hood, LSU
Alexandra Oquendo, UG
Kristen Andre, UT
Lauren Moscovic, UF
Jen Mandes, UF

Academic Honor Roll



Kelly Morrow	South Carolina	Meg Norwood	LSU	Stacy Buerger	Georgia
Kerry Ginter	Tennessee	Susan Argue	Ole Miss	Erin Gornes	Georgia
Jenny Meeks	Tennessee	Karen Horner	Ole Miss	Kristine Keese	Georgia
1996		Stephanie Somers	Ole Miss	Courtney Shealy	Georgia
Lisa Bordes	Alabama	Tara Domel	Mississippi State	Mindi Westfall	Georgia
Denise Baez	Arkansas	Jennifer Head	Mississippi State	Rebecca Dady	Georgia
Caroline Clock	Arkansas	Amy Kyrish	Mississippi State	April Barnhorst	Kentucky
Melanie Davis	Arkansas	Kelly Nicholson	Mississippi State	Jaclyn Homan	Kentucky
Jessica Field	Arkansas	Emily Smith	Mississippi State	Jennifer Reed	Kentucky
Tina Rico	Arkansas	Shani Abshier	South Carolina	Stacey Wallace	Kentucky
Piper Craig	Auburn	Stacy Donham	South Carolina	Megan Weiskircher	Kentucky
Stephanie Fine	Auburn	Ashley Edlund	South Carolina	Meghan Bedford	LSU
Heather Francy	Auburn	Dee Dee Fortman	South Carolina	Lyndsey Benson	LSU
Krista Singleton	Auburn	Faye Laires	South Carolina	Christy Carr	LSU
Rani Whitson	Auburn	Erin Toburen	South Carolina	Lauren Cuyler	LSU
Shannon Mason	Florida	Lauren Clayton	Tennessee	Jill Lytle	LSU
Julie Stanhope	Florida	Kerry Ginter	Tennessee	Meg Norwood	LSU
Nicole Shade	Florida	Mary Heinecke	Tennessee	Lauren O'Conner	LSU
Cassie Brill	Florida	Lynn Lovinger	Tennessee	Sarah Schneider	LSU
Allison Dickinson	Georgia	Jenny Meeks	Tennessee	Kelly Thompson	LSU
Sandy Kruger	Georgia	Kim Obiala	Tennessee	Lauren Dorcheus	Ole Miss
Kristi Richardson	Georgia	Christy Warren	Tennessee	Renata Nowacki	Ole Miss
Cynthia Dozier	Kentucky	1998		Leigh Rittiner	Ole Miss
Jennifer Muzzey	Kentucky	Sarah Cotton	Alabama	Kira Zschau	Ole Miss
Tracy Thompson	Kentucky	Kelly Fash	Alabama	Abby Hollander	Ole Miss
Renata Costa	LSU	Michelle Green	Alabama	Korrie Kashuba	Ole Miss
Shannon Hoelsing	LSU	Allison Lange	Alabama	Kathleen Carraro	Mississippi State
Karen Jenny	LSU	Caroline Clock	Arkansas	Melanie DiMuzio	Mississippi State
Jessica Miranda	LSU	Jessica Field	Arkansas	Michele Gordon	Mississippi State
Meg Norwood	LSU	Julie Sloniger	Arkansas	Jennifer Hazelwood	Mississippi State
Linda Tran	LSU	Kim Storey	Arkansas	Emily Mounger	Mississippi State
Susan Argue	Ole Miss	Piper Craig	Auburn	Dawn Steinhauer	Mississippi State
Danielle Atzinger	Ole Miss	Amy Wilson	Auburn	Brianne Smedley	Mississippi State
Leslie Bourgeois	Ole Miss	Jerilyn Hattendorf	Florida	Stacey Westfall	Mississippi State
Karen Horner	Ole Miss	Sandra Reboucas	Florida	Sara Heri	South Carolina
Jennifer Owens	Ole Miss	Jennifer Sanchez	Florida	Milica Perovic	South Carolina
Elizabeth Poerner	Ole Miss	Heather Wright	Florida	Cally Plummer	South Carolina
Julia Sitarz	Ole Miss	Nnenna Amobi	Georgia	Amanda Quarterman	South Carolina
Stephanie Somers	Ole Miss	Cassie Brill	Georgia	Elizabeth Price	South Carolina
Tara Domel	Mississippi State	Rebecca Dady	Georgia	Crystal Moore	South Carolina
April Donohue	Mississippi State	Allison Dickinson	Georgia	Amanda Bergey	Tennessee
Theresa Hurley	Mississippi State	Courtney Shealy	Georgia	Lauren Clayton	Tennessee
Amy Kyrish	Mississippi State	Mindi Westfall	Georgia	Melissa Kowalski	Tennessee
Emily Smith	Mississippi State	Katie Elserman	Georgia	Andrea Peterson	Tennessee
Shani Abshier	South Carolina	Jaclyn Homan	Kentucky	Lauren Proctor	Tennessee
Stacy Donham	South Carolina	Jenny Muzzey	Kentucky	Ariana Wilson	Tennessee
Ashley Edlund	South Carolina	Stacey Wallace	Kentucky	2000	
Kelly Morrow	South Carolina	Megan Weiskircher	Kentucky	Shelly Adamcik	Alabama
Erin Toburen	South Carolina	Christy Carr	LSU	Melissa Clark	Alabama
Abbey Blazer	Tennessee	Jill Lytle	LSU	Sarah Cotten	Alabama
Kerry Ginter	Tennessee	Meg Norwood	LSU	Kelly Fash	Alabama
Mary Heinecke	Tennessee	Lauren O'Connor	LSU	Katherine Gaudet	Alabama
Jenny Meeks	Tennessee	Danielle Atzinger	Ole Miss	Michelle Green	Alabama
Kim Obiala	Tennessee	Korrie Kashuba	Ole Miss	Sarah Kreimer	Alabama
Jodee Scott	Tennessee	Jill Ferguson	Mississippi State	Allison Lange	Alabama
Christy Warren	Tennessee	Jennifer Head	Mississippi State	Monica Morales	Alabama
		Brianna Smedley	Mississippi State	Emily Sebastian	Alabama
1997		Stacey Westfall	Mississippi State	Bridget Studnicka	Alabama
Laura LeBlanc	Alabama	Ashley Edlund	Mississippi State	Jennifer Wagner	Alabama
Kari Weber	Alabama	Sheri Heri	South Carolina	Michelle Coens	Arkansas
Caroline Clock	Arkansas	Kami Nordgaard	South Carolina	Kelly McCarter	Arkansas
Jessica Field	Arkansas	Mandy Quarterman	South Carolina	Amanda Rudolph	Arkansas
Tina Rico	Arkansas	Lauren Clayton	Tennessee	Julie Sloniger	Arkansas
Piper Craig	Auburn	Mary Heinecke	Tennessee	Eftila Tanellari	Arkansas
Katherine Grieve	Auburn	Chris Jestila	Tennessee	Elizabeth Windell	Arkansas
Krista Singleton	Auburn	Kim Obiala	Tennessee	Dawn Davenport	Auburn
Emily Suter	Auburn	Christine Warren	Tennessee	Jennifer Gracen	Auburn
Amy Wilson	Auburn	Ariana Wilson	Tennessee	Jaunelle L. Hamilton	Auburn
Shannon Mason	Florida			Stephanie Jackson	Auburn
Jennifer Sanchez	Florida	1999		Scheryal Lane	Auburn
Nicole Shade	Florida	Melissa Clark	Alabama	Kristina Bova	Florida
Sandra Reboucas	Florida	Sarah Cotten	Alabama	Tamara Foxworth	Florida
Cassie Brill	Georgia	Kelly Fash	Alabama	Nicole Hartley	Florida
Allison Dickinson	Georgia	Michelle Green	Alabama	Jerilyn Hattendorf	Florida
Lane Fluker	Georgia	Sarah Kreimer	Alabama	Candice McCray	Florida
Christine Nelson	Georgia	Allison Lange	Alabama	Heather Wright	Florida
Courtney Shealy	Georgia	Jennifer Wagner	Alabama	Stacy Buerger	Georgia
Lital Sisso	Georgia	Amanda Rudolph	Arkansas	Jessica Leverette	Georgia
Beverly Uipi	Georgia	Julie Sloniger	Arkansas	April Barnhorst	Kentucky
Cynthia Dozier	Kentucky	Dawn Davenport	Auburn	Katie Eiserman	Kentucky
Tracy Thompson	Kentucky	Stephanie Jackson	Auburn	Stacey Wallace	Kentucky
Emily Boken	LSU	Kristina Bova	Florida	Terri Crabb	Kentucky
Miranda Cantu	LSU	Jennifer Sanchez	Florida	Jennifer Reed	Kentucky
Shannon Hoelsing	LSU	Jerilyn Hattendorf	Florida	Megan Weiskircher	Kentucky
Jessica Miranda	LSU	Heather Wright	Florida	Meghan Bedford	LSU



Academic Honor Roll

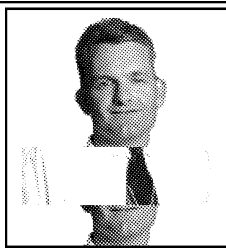
Lyndsey Benson	LSU	Jaime Burns	Ole Miss	Sarah Lansden	Ole Miss
Christy Carr	LSU	Abby Hollander	Ole Miss	Erin Newsom	Ole Miss
Lauren Cuyler	LSU	Sarah Lansden	Ole Miss	Megan McCune	Ole Miss
Meagan Davis	LSU	Renata Nowacki	Ole Miss	Leigh Rittner	Ole Miss
Jennifer Hampton	LSU	Leigh Rittner	Ole Miss	Erica Tricco	Ole Miss
Katie Kubena	LSU	Kira Zschau	Ole Miss	Cheryl Wilson	Ole Miss
Lauren O'Connor	LSU	Kathleen Carraro	Miss.State	Kathleen Carraro	Mississippi St.
Claudia Rodriguez	LSU	Michele Gordon	Miss. State	Hilary Chambers	Mississippi St.
Rachel Vogt	LSU	Misty Hubenthal	Miss. State	Michele Gordon	Mississippi St.
Jill Lytle	LSU	Emily Mounger	Miss. State	Jennifer Hadden	Mississippi St.
Addie Prewitt	LSU	Brianne Smedley	Miss. State	Misty Hubenthal	Mississippi St.
Jaime Burns	Ole Miss	Dawn Steinhauer	Miss. State	Emily Mounger	Mississippi St.
Abigail Hollander	Ole Miss	Samantha Alban	South Carolina	Jennifer Rousey	Mississippi St.
Sarah Lansden	Ole Miss	Bernadette Dwyer	South Carolina	Dawn Steinhauer	Mississippi St.
Renata Nowacki	Ole Miss	Megan Hoop	South Carolina	Sam Alban	South Carolina
Leigh Rittner	Ole Miss	Milica Perovic	South Carolina	Donisia Curry	South Carolina
Kira Zschau	Ole Miss	Cally Plummer	South Carolina	Megan Hosp	South Carolina
Aime Ewing	Ole Miss	Liz Price	South Carolina	Milica Perovic	South Carolina
Kathleen Carraro	Miss. State	Jennifer Elliott	Tennessee	Cally Plummer	South Carolina
Michele Gordon	Miss. State	Laura Paul	Tennessee	Amy Pratt	South Carolina
Misty Hubenthal	Miss. State	Andrea Peterson	Tennessee	Elizabeth Price	South Carolina
Emily Mounger	Miss. State	Lauren Proctor	Tennessee	Kristen Clements	Tennessee
Brianne Smedley	Miss. State	Kelli Scott	Tennessee	Alex Compeau	Tennessee
Dawn Steinhauer	Miss. State	Ariana Wilson	Tennessee	Jennifer Elliot	Tennessee
Jennifer Hazelwood	Miss. State			Whitney Gifford	Tennessee
Stacey Westfall	Miss. State	2002		Andrea Peterson	Tennessee
Sam Alban	South Carolina	Shelly Adamcik	Alabama	Michelle Piantadosi	Tennessee
Sara Heri	South Carolina	Jennifer Bibber	Alabama	Kelli Scott	Tennessee
Megan Hosp	South Carolina	Jennifer Cusimano	Alabama		
Cally Plummer	South Carolina	Julie Farley	Alabama	2003	
Liz Price	South Carolina	Erin Heffner	Alabama	Shelly Adamcik	Alabama
Mandy Quarterman	South Carolina	Lexee Marshall	Alabama	Jennifer Bibber	Alabama
Erika Brez	Tennessee	Erin Price	Alabama	Jennifer Cusimano	Alabama
Lauren Clayton	Tennessee	Emily Sebastian	Alabama	Julie Farley	Alabama
Mgmt.Jennifer Elliott	Tennessee	Bridget Studnicka	Alabama	Erin Heffner	Alabama
Kristen Clements	Tennessee	Kory Tull	Alabama	Erin Price	Alabama
Laura Paul	Tennessee	Jennifer Wagner	Alabama	Bridget Studnicka	Alabama
Andrea Peterson	Tennessee	Michelle Coens	Arkansas	Karla Crose	Arkansas
Lauren Proctor	Tennessee	Jennifer Haaser	Arkansas	Iva Docekalova	Arkansas
Kelli Scott	Tennessee	Michaela Koumarova	Arkansas	Jennifer Haaser	Arkansas
Ariana Wilson	Tennessee	Kelly McCarter	Arkansas	JChelsey Warmack	Arkansas
		Evgeniya Rangelova	Arkansas	Lauren Couch	Auburn
2001		Eftila Tanellari	Arkansas	Brittney Diaz	Auburn
Shelly Adamcik	Alabama	Anna Velikanova	Arkansas	Ashlee Johns	Auburn
Melissa Clark	Alabama	Elizabeth Windell	Arkansas	Bailey Veit	Auburn
Sarah Cotten	Alabama	Christine Irraggi	Auburn	Jane Collymore	Florida
Kelly Fash	Alabama	Maggie Zdrasky	Auburn	Lauren Moscovic	Florida
Katherine Gaudet	Alabama	Kris Bova	Florida	Taylor Williams	Florida
Michelle Green	Alabama	Michelle Chatman	Florida	Kaitlyn Filar	Georgia
Allison Lange	Alabama	Nicole Hartley	Florida	Andrea Fisher	Georgia
Monica Morales	Alabama	Benavia Jenkins	Florida	Luresa Forsythe	Georgia
Emily Sebastian	Alabama	Nicole McCray	Florida	Jennifer Metz	Georgia
Jen Wagner	Alabama	Lauren Moscovic	Florida	Elizabeth Pace	Georgia
Jamie Bunting	Arkansas	Kelli Notestine	Florida	Julia Petruschke	Georgia
Michelle Coens	Arkansas	Taylor Williams	Florida	Margot Wallace	Georgia
Kelly McCarter	Arkansas	Stacey Buerger	Georgia	Meagan Welch	Georgia
Evgeniya Rangelova	Arkansas	Casey DeLong	Georgia	Katherine Bright	Kentucky
Julie Sloniger	Arkansas	Luresa Forsythe	Georgia	Sissy Canfield	Kentucky
Eftila Tanellari	Arkansas	Jennifer Foytich	Georgia	Julie Davis	Kentucky
Elizabeth Windell	Arkansas	Erin Gornes	Georgia	Amy Kaplan	Kentucky
Jennifer Gracen	Auburn	Stephanie Jackson	Georgia	HSarah Spinner	Kentucky
Kristina Bova	Florida	Jennie Metz	Georgia	Danielle Wallace	Kentucky
Tamara Foxworth	Florida	Margot Wallace	Georgia	Beth Cowley	LSU
Nicole Hartley	Florida	April Barnhorst	Kentucky	Regan Hood	LSU
Jerilyn Hattendorf	Florida	Katie Bright	Kentucky	Lauren Leaumont	LSU
Candice McCray	Florida	Sissy Canfield	Kentucky	Rachel Pittman	LSU
Heather Wright	Florida	Anne Koester	Kentucky	Mary Bennett	Ole Miss
Stacy Buerger	Georgia	Leigh Marcum	Kentucky	Megan McCune	Ole Miss
Jennifer Foytich	Georgia	Elizabeth McCaslin	Kentucky	Hilary Chambers	MSU
Kristine Keese	Georgia	Sarah Spinner	Kentucky	Rachel Cooper	MSU
April Barnhorst	Kentucky	Meghan Bedford	LSU	Jennifer Hadden	MSU
Stacey Wallace	Kentucky	Lyndsey Benson	LSU	Andrea Mead	MSU
Liz McCaslin	Kentucky	Elizabeth Cowley	LSU	AJennifer Rousey	MSU
Megan Weiskircher	Kentucky	Lauren Cuyler	LSU	Tanika Taylor	MSU
Addie Prewitt	LSU	Meagan Davis	LSU	Mariana Branquinho	South Carolina
Rachel Vogt	LSU	Blaise DeRouen	LSU	Yajara Cadet	South Carolina
Meghan Bedford	LSU	Jennifer Hampton	LSU	Donesia Curry	South Carolina
Lyndsey Benson	LSU	Regan Hood	LSU	Lyane Vanden Hull	South Carolina
Christy Carr	LSU	Katie Kubena	LSU	Sarah Morgan	South Carolina
Lauren Cuyler	LSU	Kyra Lancon	LSU	Kristen Andre	Tennessee
Meagan Davis	LSU	Rachel Pittman	LSU	Whitney Gifford	Tennessee
Jenny Greco	LSU	Addie Prewitt	LSU	Heather Harrington	Tennessee
Jennifer Hampton	LSU	Mary Nell Bennett	Ole Miss	Morgan Miltner	Tennessee
Katie Kubena	LSU	Jaime Burns	Ole Miss	Amy Morris	Tennessee
Jill Lytle	LSU	Amie Ewing	Ole Miss		
Lauren O'Conner	LSU	Abby Hollander	Ole Miss		

Honors



SEC Coach Of The Year

- 1983 - Marilyn McReavy, Florida
Mary Jo Pepler, Kentucky
- 1984 - Bob Bertucci, Tennessee
- 1985 - Sid Feldman, Georgia
- 1986 - J. Scott Luster, LSU
- 1987 - Sandy Lynn, Tennessee
- 1988 - Sandy Lynn, Tennessee
- 1989 - J. Scott Luster, LSU
- 1990 - J. Scot Luster, LSU
- 1991 - Mary Wise, Florida
- 1992 - Mary Wise, Florida
- 1993 - Mary Wise, Florida
- 1994 - Chris Poole, Arkansas
- 1995 - Mary Wise, Florida
- 1996 - Mary Wise, Florida
- 1997 - Kim Hudson, South Carolina
- 1998 - Mary Wise, Florida
- 1999 - Mary Wise, Florida
- 2000 - Mary Wise, Florida
- 2001 - Mary Wise, Florida
- 2002 - Mary Wise, Florida
- 2003- Chris Poole, Arkansas



Chris Poole
Arkansas



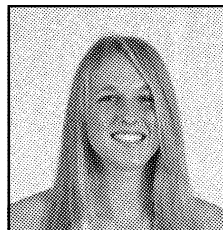
Aury Cruz
Florida

SEC Player Of The Year

- 1992 - Gudula Staub, Florida
- 1993 - Aycan Gokberk, Florida
- 1994 - Priscilla Pacheco, Georgia
- 1995 - Aycan Gokberk, Florida
- 1996 - Jenny Wood, Florida
- 1997 - Nina Foster, Florida
- 1998 - Jenny Manz, Florida
- 1999 - Jenny Manz, Florida
- 2000 - Nicole McCray, Florida
- 2001 - Aury Cruz, Florida
- 2002 - Aury Cruz, Florida
- 2003- Aury Cruz, Florida



Denitza Kovela
Arkansas



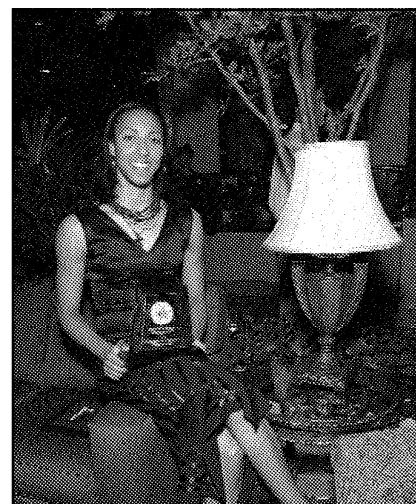
Lynae Vanden Hull
South Carolina

SEC Freshman Of The Year

- 1991 - Priscilla Pacheco, Georgia
- 1992 - Hadli Anstine, Georgia
- 1993 - Allyson Beecroft, Auburn
- 1994 - Nina Foster, Alabama
- 1995 - Cassie Brill, Georgia
- 1996 - Rebecca Dady, Georgia
- 1997 - Jaunelle Hamilton, Auburn
- 1998 - *Not elected in 1998*
- 1999 - Libby Windell, Arkansas
- 2000 - Aury Cruz, Florida
- 2001 - Jennifer Haaser, Arkansas
- 2002 - Julia Petruschke, Georgia
- 2003- Denitza Kovela, Arkansas
- 2003- Lynae Vanden Hull, S. Carolina

SEC All-Americans AVCA

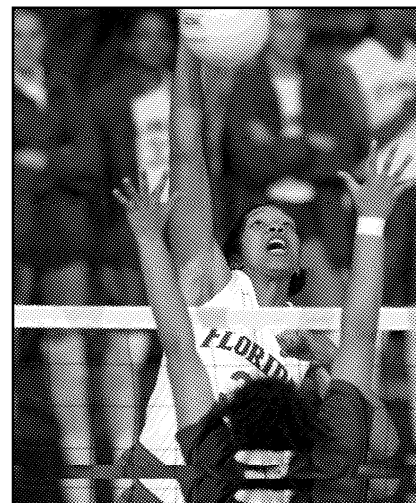
- | | | | |
|--|---|--|--|
| <p>1982
Beverly Robeinson, UT</p> <p>1983
Marsha Bond, UK
Karolyn Kirby, UK</p> <p>1984
Second Team
April Chapple, UT</p> <p>1986
Second Team
Wendy Stammer, LSU</p> <p>1987
Second Team
Annette Ewasek, UK</p> <p>1988
Second Team
Lisa Bokovoy, UK</p> <p>1990
First Team
Monique Adams, LSU</p> <p>1991
First Team
Gudula Staub, UF</p> | <p>Monique Adams, LSU</p> <p>Second Team
Angie Miller, LSU
Dani Reis, LSU</p> <p>1992
First Team
Gudula Staub, UF
Angie Miller, LSU</p> <p>Second Team
Heidi Anderson, UF
Dani Reis, LSU</p> <p>1993
First Team
Aycan Gokberk, UF
Priscilla Pacheco, UG</p> <p>1994
First Team
Priscilla Pacheco, UG</p> <p>Second Team
Nikki Nicholson, UG</p> <p>1995
First Team
Aycan Gokberk, UF</p> | <p>Second Team
Ashley Mullis, UF</p> <p>1996
Second Team
Jenny Wood, UF
Aurymar Rodriguez, UF</p> <p>1997
First Team
Nina Foster, UF</p> <p>Second Team
Jessica Field, ARK</p> <p>1998
First Team
Jenny Manz, UF</p> <p>Second Team
Jennifer Sanchez, UF
Kim Storey, ARK</p> <p>1999
Second Team
Jenny Manz, UF</p> | <p>2001
First Team
Aury Cruz, UF</p> <p>Second Team
Benavia Jenkins, UF</p> <p>2002
First Team
Aury Cruz, UF</p> <p>Second Team
Nicole McCray, UF</p> <p>Third Team
Benavia Jenkins, UF</p> <p>2003
First Team
Aury Cruz, UF</p> <p>Second Team
Benavia Jenkins, UF
Sherri Williams, UF</p> <p><i>Note: The AVCA began naming a second team All-America squad in 1984 and third team in 2002.</i></p> |
|--|---|--|--|



Aury Cruz - Florida
2003 Player of the Year

Volleyball Monthly

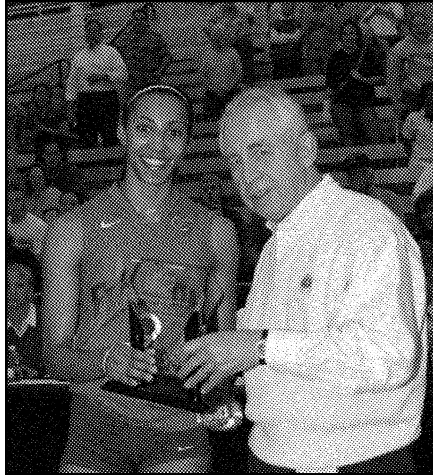
- | | | | |
|---|--|--|---|
| <p>1984
Third Team
April Chappe, UT</p> <p>1986
Third Team
Wendy Stammer, LSU</p> <p>1987
Hon. Mention
Annette Ewasek, UK</p> <p>1988
Third Team
Lisa Bokohov, UK</p> <p>1989</p> | <p>Hon. Mention
Nyla Sheppard, LSU</p> <p>1990
First Team
Monique Adams, LSU</p> <p>Hon. Mention
Danielle Reis, LSU</p> <p>1991
First Team
Monique Adams, LSU</p> <p>Second Team
Gudula Staub, UF
Angie Miller, LSU</p> | <p>Hon. Mention
Dani Reis, LSU</p> <p>1992
First Team
Gudula Staub, UF</p> <p>Second Team
Angie Miller, LSU</p> <p>Hon. Mention
Danielle Reis, LSU
Heidi Anderson, UF</p> <p>All-Freshman
Aycan Gokberk, UF</p> <p>1993</p> | <p>First Team
Aycan Gokberk, UF
Priscilla Pacheco, UG</p> <p>Third Team
Eunice Thompson, UK</p> <p>Hon. Mention
Jane Belanger, UK
Nikki Nickolson, UG</p> <p>1994
First Team
Priscilla Pacheco, UG</p> <p>Hon. Mention
Nikki Nicholson, UG</p> |
|---|--|--|---|



Sherri Williams
AVCA Second Team All-America

Tachikara, AVCA Division I Coach Of The Year

- | | |
|-------------------------------|--------------------------------------|
| 1987 - Kathy DeBoer, Kentucky | 1998 - Mary Wise, Florida (Dist. IV) |
| 1992 - Mary Wise, Florida | 1999 - Mary Wise, Florida (Dist. IV) |
| 1996 - Mary Wise, Florida | 2000 - Mary Wise, Florida (Dist. IV) |



Aury Cruz, Florida
2003 SEC Tournament MVP

SEC Tournament MVPs

- 1982 - Beverly Robinson, Tennessee
- 1983 - Carolyn Kirby, Kentucky
- 1984 - April Chapple, Tennessee
- 1985 - Sandi Trani, Georgia
- 1986 - Detra Brown, LSU
- 1987 - Lisa Dausman, Kentucky
- 1988 - Kim Thompson, Kentucky
- 1989 - Dani Reis, LSU
- 1990 - Luciana Reis, LSU
- 1991 - Monique Adams, LSU
- 1992 - Gudula Staub, Florida
- 1993 - Aycan Gokberk, Florida
- 1994 - Priscilla Pacheco, Georgia
- 1995 - Aycan Gokberk, Florida
- 1996 - Aurymar Rodriguez, Florida
- 1997 - Krystal Osborne, Arkansas
- 1998 - Heather Wright, Florida
- 1999 - Jenny Whitehead, Florida
- 2000 - Aury Cruz, Florida
- 2001 - Aury Cruz, Florida
- 2002 - Jacque Robinson, Florida
- 2003- Aury Cruz, Florida

SEC All-Tournament Teams

1979

Eileen Kohrheer, UA
Nancy Woosley, UA
Kim Clay, UK
Mary Freitag, UK
Tanya Sparks, UM
Ingrid Mueller, UT

1980

Eileen Kohrheer, UA
Nancy Woosley, UA
Kim Clay, UK
Tanya Haave, UT
Lisa Huntley, UT

1981

Nancy Woosley, UA
Sue Ushela, UG
Marsha Bond, UK
Sandy Glasscock, UK
Rose Magers, LSU
Robin Maine, UT
Lezil McPhail, UT
Beverly Robinson, UT

1982

Jane Lembke, UG
Marsha Bond, UK
Kim Clay, UK
Leah Bennett, LSU
Claudia Lee, LSU
April Chappel, UT
Bonnie Kenny, UT
Beverly Robinson, UT

1983

Jane Lembke, UG
Marsha Bond, UK
Carolyn Kirby, UK
Leah Bennett, LSU
Paula Rideau, LSU
Maureen Marek, LSU
Julie Link, UM
Robin Maine, UT
Beverly Robinson, UT
Elizabeth Chavez, UT

1984

Wendy Stevenson, UF
Karen Kelly, UG
Lisa Dausman, UK
Lori Erpenbeck, UK
Kim Martinson, UK
Irene Smyth, UK
Leah Bennett, LSU
Yolanda Biebrich, UM
Angela Scott, UM

April Chapple, UT
Dona Monaco, UT
Laura Wessberg, UT

1985

Wendy Stevenson, UF
Laurie Henderson, UG
Jenny McDowell, UG
Diane Rohde, UG
Sandi Trani, UG
Jill Ackerman, UK
Sandra Lunney, UK
Detra Brown, LSU
Lisa Smith, LSU
Wendy Stammer, LSU
Delories Flowers, UM
Julie Link, UM

1986

Shelley Gross, UG
Jenny McDowell, UG
Irene Smith, UK
Annette Ewasek, UK
Jill Ackerman, UK
Wendy Stammer, LSU
Detra Brown, LSU

1987

Terri Duckworth, AU
Lenee Hill, UF
Lyra Vance, UF
Martha Ryans, UF
Jenny McDowell, UG
Laura Linder, UK
Kim Thompson, UK
Simone DePaula, LSU
Sibel Gurkan, LSU
Chris Houck, UM
Kris Dawson, MSU
Laurie Carher, UT
Lisa Stegman, UT

1988

Connie Wolter, UF
Lisa Bokovoy, UK
Laura Linder, UK
Fran Lupo, LSU
Stephanie Ehlers, UT
Dianne Shoemaker, UT

1989

Kelli Ogden, UG
Mary Jones, UK
Laura Linder, UK
Monique Adams, LSU
Julie Stempel, LSU
Tessa Sulatycke, LSU

1990

Steffi Legall, UF
Lenore Davis, UG
Christie Lord, UG
Monique Adams, LSU
Nyla Shepherd, LSU
Julie Stempel, LSU
Luciana Reis, LSU

1991

Steffi Legall, UF
Gudula Staub, UF
Eunice Thomas, UK
Angie Miller, LSU
Dani Reis, LSU

1992

Heidi Anderson, UF
Priscilla Pacheco, UG
Eunice Thomas, UK
Angie Miller, LSU
Dani Reis, LSU

1993

Missy Aggertt, UF
Ashley Cook, UG
Nikki Nicholson, UG
Priscilla Pacheco, UG
Eunice Thomas, UK

1994

Molly Dreisback, UK
Missy Aggertt, UF
Meg Fitzgerald, UF
Julie Stanhope, UF
Jenny Wood, UF
Nikki Nicholson, UG

1995

Krystal Osborne, ARK
Sarah Watson, AU
Missy Aggertt, UF
Aycan Gokberk, UF
Ashley Mullis, UF
Ashley Edlund, USC
Cindy Robarge, USC

1996

Denise Baez, ARK
Krystal Osborne, ARK
Rani Whitson, AU
Nina Foster, UF
Aurymar Rodriguez, UF
Jenny Wood, UF
Lori Drost, USC
Ashley Edlund, USC

1997

Krystal Osborne, ARK

Tina Rico, ARK
Yarleen Santiago, ARK
Kim Storey, ARK
Nina Foster, UF
Kathy Vis, UG

1998

Jessica Field, ARK
Jeni Jones, UF
Jenni Keene, UF
Jenny Manz, UF
Yarleen Santiago, ARK
Kim Storey, ARK
Heather Wright, UF

1999

Jenny Whitehead, UF
Jen Sanchez, UF
Jeryllyn Hattendorf, UF
Yarleen Santiago, ARK
Ariana Wilson, UT
Kristin Batt, UK

2000

Aury Cruz, UF
Stacy Buerger, UG
Lauren Cuyler, LSU
Niki Hartley, UF
Benavia Jenkins, UF
Ariana Wilson, UT

2001

Aury Cruz, UF
Libby Windell, ARK
Nicole McCray, UF
Jennifer Haaser, ARK
Kris Bova, UF
Eftila Tanellari, ARK

2002

Jacque Robinson, UF
Libby Windell, ARK
Benavia Jenkins, UF
Anna Velikanova, ARK
Nicole McCray, UF
Aury Cruz, UF

2003

Aury Cruz, UF
Jane Collymore, UF
Lauren Mosaicov, UF
Sara Kincaid, ARK
Roberta Tamauskaite, ARK
Michelle Piantadosi, UT



Hitting Percentage

<i>Single Season</i>		
.465	Benavia Jenkins, UF	2003
.462	Sherri Williams, UF	2003
.451	Heather Wright, UF	1999
.428	Libby Windell, ARK	2001
.423	Aycan Gokberk, UF	1995
.422	Evgeniya Rangelova, ARK	2001
.416	Nina Foster, UF	1997
.416	Beverly Robinson, UT	1983
.416	Kim Storey, ARK	1998
.411	Ashley Edlund, USC	1997
.410	Heather Wright, UF	1998
.402	Aycan Gokberk, UF	1993

<i>Career (min. 1000 attempts)</i>		
.424	Heather Wright, UF	1997-99
.403	Nina Foster, UF	1996-97
.394	Aycan Gokberk, UF	1992-95
.380	Marsha Bond, UK	1980-83
.369	Jaunelle Hamilton, AU	1997-00
.368	Benavia Jenkins	2000-203
.366	Angie Miller, LSU	1991-92
.365	Gudula Staub, UF	1991-92
.365	Kim Storey, ARK	1995-98
.359	Beverly Robinson, UT	1982-83
.355	Libby Windell	1999-02

Kills

<i>Single Season</i>		
874	Marsha Bond, UK	1983
785	Priscilla Pacheco, UG	1994
756	Tanya Haave, UT	1980
754	Priscille Pacheco, UG	1993
738	Nina Foster, UA	1994
715	Shelly Gross, UG	1986
703	Wendy Stemmer, LSU	1986
676	Krystal Osborne, ARK	1995
674	Aycan Gokberk, UF	1993
657	Leah Bennett, LSU	1983

<i>Career</i>		
2675	Priscilla Pacheco, UG	1991-94
2185	Krystal Osborne, ARK	1994-97
1850	Nikki Nicholson, UG	1992-95
1781	Tamala Brightman, UT	1990-93
1737	Molly Dreisbach, UK	1992-95
1735	Nyla Shepherd, LSU	1988-91
1732	Ariana Wilson, UT	1998-01
1727	Allyson Beecroft, AU	1993-96
1721	Aycan Gokberk, UF	1992-95
1682	Michelle Green, UA	1997-00

Assists

<i>Single Season</i>		
1745	Jennifer Sanchez, UF	1998
1701	Dani Reis, LSU	1990
1701	Jenny McDowell, UG	1986
1670	Ning Zhao, ARK	1998
1664	Jane Belanger, UK	1991
1654	Michelle Whitby-York, UM	1989
1651	Yolanda Biobrich, UM	1985
1630	Jenny McDowell, UG	1985
1611	Dani Reis, LSU	1989
1608	Dani Reis, LSU	1991

<i>Career</i>		
6379	Dani Reis, LSU	1989-92
5886	Tina Rico, ARK	1994-97
5667	Jenny McDowell, UG	1984-87
5505	Jenny Hazelwood, MSU	1996-99
5425	Laura Linder, UK	1987-90

5177	Ashley Edlund, USC	1995-98
5069	Erica Lear, UT	1998-01
5053	Piper Craig, AU	1995-98
4861	Jane Belanger, UK	1992-93
4855	Heidi Anderson, UF	1989-92

Total Attacks

<i>Single Season</i>		
1801	Krystal Osborne, ARK	1995
1800	Priscilla Pacheco, UG	1994
1720	Jaimie Torromeo, ARK	1994
1666	Marsha Bond, UK	1983
1631	Tanya Haave, UT	1980
1629	Krystal Osborne, ARK	1994
1623	Molly Dreisbach, UK	1994
1587	Priscilla Pacheco, UG	1993
1544	Sue Faris, UA	1989
1536	Mary Ahern, UM	1989
1516	Denise Baez, ARK	1995
1510	Nina Foster, UA	1994

<i>Career</i>		
6006	Priscilla Pacheco, UG	1991-94
5626	Krystal Osborne, ARK	1994-97
4349	Allyson Beecroft, AU	1993-96
4296	Molly Dreisbach, UK	1992-95
4132	Melissa Kariker, MSU	1993-96
4094	Nikki Nicholson, UG	1992-95
4080	Susan Argue, UM	1994-97
4040	Julia Sitarz, UM	1993-96
4011	Jennifer Hampton, LSU	1999-2002
3946	Michelle Green, UA	1997-2000

Service Aces

<i>Single Season</i>		
151	Wendy Stammer, LSU	1986
126	Beverly Robinson, UT	1982
119	Jane Lembke, UG	1982
117	Louise Hall, UA	1976
107	Wendy Stammer, LSU	1985
107	Jenifer Kleyn, AU	1990
103	Claudia Lee, LSU	1982
100	Tish McHenry, LSU	1982
99	Monica Freitas, LSU	1987
96	Jenifer Kleyn, AU	1991

<i>Career</i>		
365	Wendy Stammer, LSU	1983-86
338	Jenifer Kleyn, AU	1988-91
255	Robin Maine, UT	1980-83
254	Dani Reis, LSU	1989-92
251	Julie Link, UM	1983-86
250	Sue Faris, UA	1989-92
244	April Chapple, UT	1981-84
236	Lyra Vance, UF	1984-87
233	Cally Plummer, USC	1998-02
205	Julie Stempel, LSU	1988-91

Digs

<i>Single Season</i>		
655	Shelly Gross, UG	1986
580	Laurie Henderson, UG	1985
575	Shelly Gross, UG	1985
525	Tanya Diamond, UK	1983
516	Luciana Reis, LSU	1993
508	Misty Farmer, MSU	1995
503	Krystal Osborne, ARK	1995
503	Michelle Whitby-York, UM	1989
501	Jaimie Torromeo, ARK	1994
500	Lorian Newcomer, UA	1994

<i>Career</i>		
1748	Shelly Gross, UG	1983-86

1707	Melissa Kariker, MSU	1993-96
1659	Krystal Osborne, ARK	1994-97
1527	Dani Reis, LSU	1989-92
1474	Kristy Dobson, UT	1988-91
1462	Jenny McDowell, UG	1984-87
1444	Lyra Vance, UF	1984-87
1380	Luciana Reis, LSU	1990-93
1371	Shauna Owens, MSU	1988-91
1370	Laurie Henderson, UG	1982-85

Block Solos

<i>Single Season</i>		
148	Marsha Bond, UK	1983
135	Marie Therese Gillcrist, UT	1981
111	Karolyn Kirby, UK	1983
91	Lisa Smith, LSU	1986
91	Nina Foster, UA	1994
80	Lisa Bokovoy, UK	1985
78	Robin Maine, UT	1982
76	Robin Maine, UT	1983
74	Lori Erpenbeck, UK	1983
69	Stacey Samuels, LSU	1986

<i>Career</i>		
238	Robin Maine, UT	1980-83
210	Lisa Bokovoy, UK	1985-88
196	Genevieve Shy, UM	1993-96
190	Lisa Smith, LSU	1984-87
175	Julie Link, UM	1983-86
175	Julie Stempel, LSU	1988-91
159	Tory Gutierrez, AU	1989-92
158	Gina Thomas, AU	1988-92
155	Hadli Anstine, UG	1992-95
148	Marsha Bond, UK	1980-83

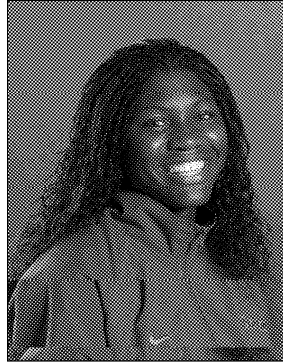
Block Assists

<i>Single Season</i>		
190	Stacey Samuels, LSU	1985
189	Stacey Samuels, LSU	1986
184	Jessica Field, ARK	1999
186	Libby Windell, ARK	1998
178	Cassie Brill, UG	1995
174	Jennifer Haaser, ARK	2001
171	Nina Foster, UF	1997
162	Benavia Jenkins	2002
151	Jessica Field, ARK	1997
150	Heather Wright, UF	1998
149	Libby Windell, ARK	2002
149	Aycan Gokberk, UF	1995
149	Nina Foster, UA	1994

<i>Career</i>		
599	Jessica Field, ARK	1995-98
589	Libby Windell, ARK	1999-02
502	Benavia Jenkins	2000-2003
495	Lisa Smith, LSU	1984-87
477	Julie Stempel, LSU	1988-91
468	Meagan Davis, LSU	1998-01
464	Kim Storey, ARK	1995-98
457	Stacey Samuels, LSU	1984-86
426	Rani Whitson, AU	1993-96
413	Lital Sisso, UG	1994-97
400	Lisa Bokovoy, UK	1985-88

Hitting Percentage

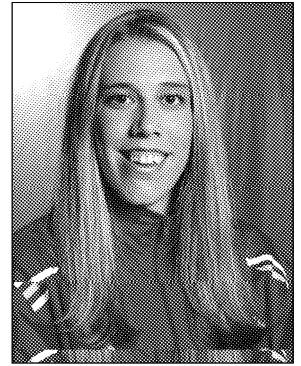
1983	Bev Robinson, UT	.416
1984	Jackie McCrae, UM	.318
1985	Detra Brown, LSU	.321
1986	Shelly Gross, UG	.348
1987	Lisa Bokovoy, UK	.389
1988	Lisa Bokovoy, UK	.356
1989	Aimee York, MSU	.340
1990	Andrea Miller, UA	.345
1991	Angie Miller, LSU	.398
1992	Hadli Anstine, UG	.389
1993	Aycan Gokberk, UF	.402
1994	Julie Stanhope, UF	.351
1995	Aycan Gokberk, UF	.423
1996	Nina Foster, UF	.385
1997	Nina Foster, UF	.416
1998	Heather Wright, UF	.410
1999	Heather Wright, UF	.451
2000	Berna Dwyer, USC	.378
2001	Libby Windell, ARK	.428
2002	Niece Curry, SC	.404
2003	Benavia Jenkins, UF	.465



Benavia Jenkins

Blocks

1983	Marsha Bond, UK	2.40
1984	Edwina Anthony, MSU	1.29
1985	Stats Not Available	
1986	Stacey Samuels, LSU	1.60
1987	Lisa Smith, LSU	1.47
1988	Lisa Bokovoy, UK	1.50
1989	Jenni Patterson, UF	1.79
1990	Julie Stempel, LSU	1.29
1991	Angie Miller, LSU	1.64
1992	Angie Miller, LSU	1.50
1993	Hadli Anstine, UG	1.38
1994	Nina Foster, UA	1.90
1995	Cassie Brill, UG	1.82
1996	Jenny Muzzey, UK	1.36
1997	Nina Foster, UF	1.56
1998	Jaclyn Homan, UK	1.36
1999	Libby Windell, ARK	1.56
2000	Benavia Jenkins, UF	1.63
2001	Jennifer Haaser, ARK	1.67
2002	Benavia Jenkins, UF	1.52
2003	Sara Kincaid, AR	1.48



Sara Kincaid

Kills

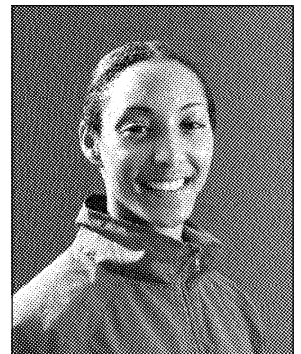
1983	Marsha Bond, UK	4.72
1984	April Chapple, UT	3.80
1985	Shelly Gross, UG	3.82
1986	Shelly Gross, UG	4.96
1987	Annette Ewasek, UK	3.89
1988	Diane Shoemaker, UT	5.69
1989	Sue Faris, UA	4.84
1990	Monique Adams, LSU	4.51
1991	Monique Adams, LSU	4.53
1992	Priscilla Pacheco, UG	5.40
1993	Priscilla Pacheco, UG	6.44
1994	Priscilla Pacheco, UG	6.18
1995	Nina Foster, UA	5.46
1996	Carmis Franks, LSU	4.50
1997	Brooke McCarley, AU	4.83
1998	Jenny Manz, UF	4.56
1999	Michelle Green, UA	4.58
2000	Ariana Wilson, UT	4.77
2001	Aury Cruz, UF	4.95
2002	Julia Petrushke, UG	4.93
2003	Erin Heffner, UA	4.82



Erin Heffner

Service Aces

1983	April Chapple, UT	0.77
1984	Julie Link, UM	0.57
1985	Simone DePaula, LSU	0.47
1986	Wendy Stammer, LSU	0.95
1987	Terri Duckworth, AU	0.76
1988	Fran Lupo, LSU	0.61
1989	Jenifer Kleyn, AU	0.78
1990	Jenifer Kleyn, AU	0.80
1991	Jenifer Kleyn, AU	0.70
1992	Sonja Thomas, UT	0.60
1993	Luciana Santana, LSU	0.56
1994	Priscilla Pacheco, UG	0.50
1995	Luciana Santana, LSU	0.55
1996	Tina Rico, ARK	0.38
1997	Kathy Vis, UG	0.62
1998	Cally Plummer, USC	0.77
1999	Rebecca Dady, UG	0.47
2000	Cally Plummer, USC	0.54
2001	Kelli Scott, UT	0.70
2002	Cally Plummer, SC	0.57
2003	Aury Cruz, UF	0.53



Aury Cruz

Assists

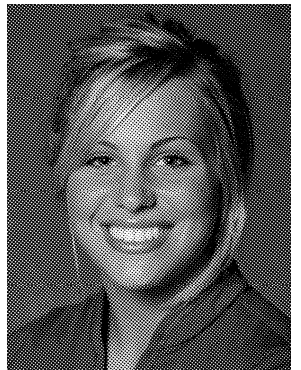
1983	Stats Not Available	
1984	Jenny McDowell, UG	10.79
1985	Jenny McDowell, UG	11.16
1986	Jenny McDowell, UG	11.60
1987	Laura Linder, UK	12.32
1988	Wendy Jones, UT	12.62
1989	Laura Linder, UK	12.73
1990	Laura Linder, UK	12.82
1991	Dani Reis, LSU	13.06
1992	Jodi Kruse, UG	13.76
1993	Jodi Kruse, UG	13.39
1994	Missy Aggertt, UF	13.05
1995	Randi Winn, LSU	13.08
1996	Nikki Shade, UF	12.90
1997	Piper Craig, AU	14.16
1998	Jennifer Sanchez, UF	13.74
1999	Jennifer Sanchez, UF	13.13
2000	Erica Lear, UT	13.60
2001	Kris Bova, UF	12.99
2002	Lauren Moscovic, UF	12.88
2003	Lauren Moscovic, UF	13.14



Lauren Moscovic

Digs

1983	Laurie Henderson, UG	3.76
1984	Laurie Henderson, UG	3.97
1985	Shelly Gross, UG	3.41
1986	Shelly Gross, UG	4.55
1987	Gretchen Thompson, AU	3.50
1988	Stephanie Ehlers, UT	3.59
1989	Roni Armeda, UF	3.79
1990	Steffi Legall, UF	3.69
1991	Kristy Dobson, UT	3.71
1992	Shae Powell, UM	3.70
1993	Luciana Reis, LSU	4.26
1994	Lorian Newcomer, UA	4.27
1995	Kori Ermigarat, USC	4.32
1996	Fernanda Laires, USC	4.23
1997	Fernanda Laires, USC	3.77
1998	Melanie Dimuzio, MSU	3.19
1999	Stephanie Jackson, AU	3.58
2000	Jennifer Hampton, LSU	3.83
2001	Aury Cruz, UF	3.34
2002	Yajaira Cadet, SC	3.37
2003	Jenni Casper, UF	3.75



Jenni Casper